

For Research Use Only

Midkine Monoclonal antibody, PBS Only (Detector)

Catalog Number: 60759-2-PBS



Basic Information

Catalog Number:

60759-2-PBS

Size:

1 mg/ml

Source:

Mouse

Isotype:

IgG3

Immunogen Catalog Number:

AG33793

GenBank Accession Number:

BC011704

GeneID (NCBI):

4192

UNIPROT ID:

P21741

Full Name:

midkine (neurite growth-promoting factor 2)

Calculated MW:

16 kDa

Purification Method:

Protein A Magarose purification

CloneNo.:

2A7F2

Applications

Tested Applications:

Cytometric bead array, Indirect ELISA

Species Specificity:

human

Background Information

Storage

Storage:

Store at -80°C.

The product is shipped with ice packs. Upon receipt, store it immediately at -80°C

Storage Buffer:

PBS Only

For technical support and original validation data for this product please contact:

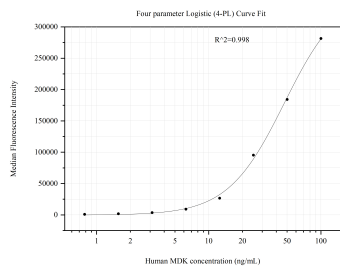
T: 4006900926

E: Proteintech-CN@ptglab.com

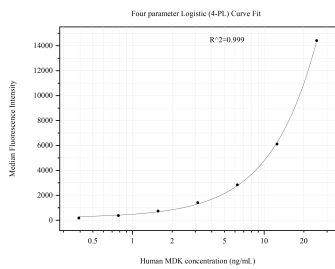
W: ptgcn.com

This product is exclusively available under Proteintech Group brand and is not available to purchase from any other manufacturer.

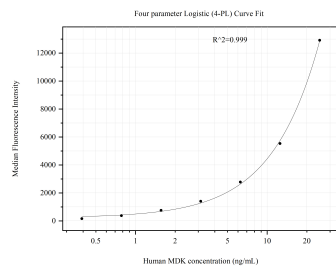
Selected Validation Data



Cytometric bead array standard curve of MP51205-1, Midkine Monoclonal Matched Antibody Pair, PBS Only. Capture antibody: 60759-1-PBS. Detection antibody: 60759-2-PBS. Standard:Ag33793. Range: 0.781-100 ng/mL



Cytometric bead array standard curve of MP51205-2, Midkine Monoclonal Matched Antibody Pair, PBS Only. Capture antibody: 60759-3-PBS. Detection antibody: 60759-2-PBS. Standard:Ag33793. Range: 0.391-25 ng/mL



Cytometric bead array standard curve of MP51205-3, Midkine Monoclonal Matched Antibody Pair, PBS Only. Capture antibody: 60759-4-PBS. Detection antibody: 60759-2-PBS. Standard:Ag33793. Range: 0.391-25 ng/mL