

For Research Use Only

TGFR1 Monoclonal antibody, PBS Only (Detector)

Catalog Number:60748-4-PBS



Basic Information

Catalog Number:

60748-4-PBS

Concentration:

1 mg/ml

Source:

Mouse

Isotype:

IgG1

Immunogen Catalog Number:

AG31620

GenBank Accession Number:

NM_004612

GeneID (NCBI):

7046

UNIPROT ID:

P36897

Full Name:

transforming growth factor, beta
receptor 1

Calculated MW:

56KD

Purification Method:

Protein G purification

CloneNo.:

1C8H1

Applications

Tested Applications:

Cytometric bead array, Sandwich ELISA, Indirect ELISA,
Sample test

Species Specificity:

human

Background Information

Storage

Storage:

Store at -80°C.

The product is shipped with ice packs. Upon receipt, store it immediately at -80°C

Storage Buffer:

PBS only, pH7.3

For technical support and original validation data for this product please contact:

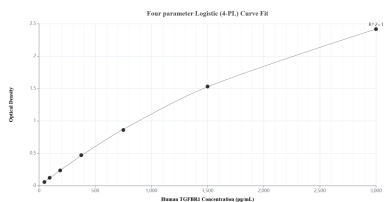
T: 4006900926

E: Proteintech-CN@ptglab.com

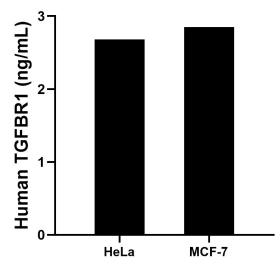
W: ptgcn.com

This product is exclusively available under Proteintech Group brand and is not available to purchase from any other manufacturer.

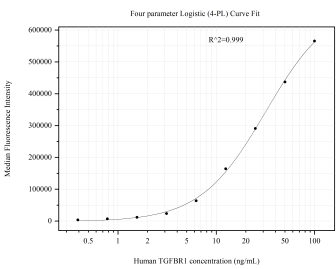
Selected Validation Data



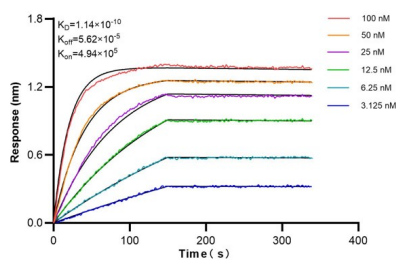
Sandwich ELISA standard curve of MP51081-2, Human TGFBR1 Monoclonal Matched Antibody Pair - PBS only. 60748-3-PBS was coated to a plate as the capture antibody and incubated with serial dilutions of standard Ag31620. 60748-4-PBS was HRP conjugated as the detection antibody. Range: 46.9-3000 pg/mL.



The mean TGFBR1 concentration was determined to be 2.7 ng/mL in HeLa cell extract based on a 1.8 mg/mL extract load and 2.9 ng/mL in MCF-7 cell extract based on a 2.4 mg/mL extract load.



Cytometric bead array standard curve of MP51081-2, TGFBR1 Monoclonal Matched Antibody Pair, PBS Only. Capture antibody: 60748-3-PBS. Detection antibody: 60748-4-PBS. Standard: Ag31620. Range: 0.391-100 ng/mL.



Biolayer interferometry (BLI) kinetic assays of 60748-4-Ig against Human TGFBR1 were performed. The affinity constant is 0.114 nM.