

For Research Use Only

# SOST/Sclerostin Monoclonal antibody, PBS Only (Capture)

Catalog Number: 60726-1-PBS



## Basic Information

Catalog Number:

60726-1-PBS

Concentration:

1 mg/ml

Source:

Mouse

Isotype:

IgG2a

GenBank Accession Number:

BC101086

GeneID (NCBI):

50964

UNIPROT ID:

Q9BQB4

Full Name:

sclerosteosis

Calculated MW:

213 aa, 24 kDa

Purification Method:

Protein A purification

CloneNo.:

1E10G2

## Applications

Tested Applications:

Cytometric bead array, Sandwich ELISA, Indirect ELISA,  
Sample test

Species Specificity:

human

## Background Information

### Storage

Storage:

Store at -80°C.

**The product is shipped with ice packs. Upon receipt, store it immediately at -80°C**

Storage Buffer:

PBS Only

For technical support and original validation data for this product please contact:

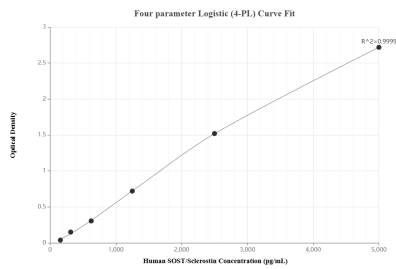
T: 4006900926

E: [Proteintech-CN@ptglab.com](mailto:Proteintech-CN@ptglab.com)

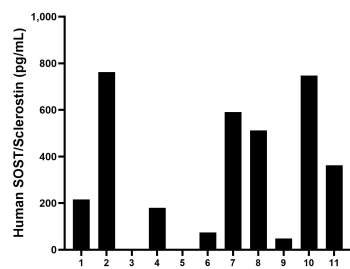
W: [ptgcn.com](http://ptgcn.com)

**This product is exclusively available under Proteintech Group brand and is not available to purchase from any other manufacturer.**

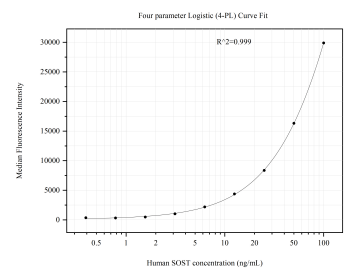
## Selected Validation Data



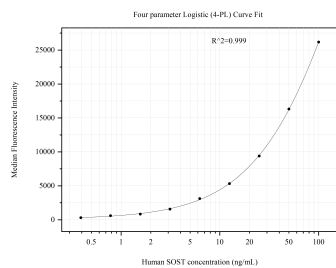
Sandwich ELISA standard curve of MP51041-2, Human SOST/Sclerostin Monoclonal Matched Antibody Pair - PBS only. 60726-1-PBS was coated to a plate as the capture antibody and incubated with serial dilutions of standard Eg0407. 60726-3-PBS was HRP conjugated as the detection antibody. Range: 156-5000 pg/mL



Serum of eleven individual healthy human donors was measured. The SOST/Sclerostin concentration of detected samples was determined to be 388.2 pg/mL with a range of ND-762.5 pg/mL



Cytometric bead array standard curve of MP51041-1, SOST/Sclerostin Monoclonal Matched Antibody Pair, PBS Only. Capture antibody: 60726-1-PBS. Detection antibody: 60726-2-PBS. Standard:Eg0407. Range: 0.391-100 ng/mL



Cytometric bead array standard curve of MP51041-2, SOST Monoclonal Matched Antibody Pair, PBS Only. Capture antibody: 60726-1-PBS. Detection antibody: 60726-3-PBS. Standard:Eg0407. Range: 0.391-100 ng/mL