

For Research Use Only

CCR10 Monoclonal antibody, PBS Only (Detector)

Catalog Number: 60574-2-PBS



Basic Information

Catalog Number:	60574-2-PBS	GenBank Accession Number:	BC099840	Purification Method:	Protein G purification
Concentration:	1 mg/ml	GeneID (NCBI):	2826	CloneNo.:	3A4E4
Source:	Mouse	UNIPROT ID:	P46092		
Isotype:	IgG1	Full Name:	chemokine (C-C motif) receptor 10		
Immunogen Catalog Number:	AG17212	Calculated MW:	362 aa, 38 kDa		

Applications

Tested Applications:
Cytometric bead array, Sandwich ELISA, Indirect ELISA, Sample test

Species Specificity:
human

Background Information

Storage

Storage:
Store at -80°C.
The product is shipped with ice packs. Upon receipt, store it immediately at -80°C

Storage Buffer:
PBS only, pH7.3

For technical support and original validation data for this product please contact:

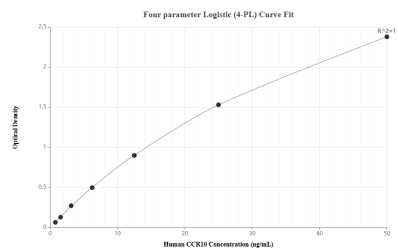
T: 4006900926

E: Proteintech-CN@ptglab.com

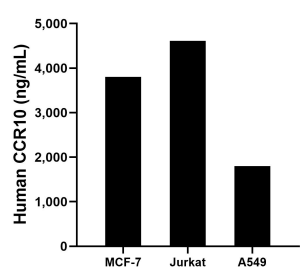
W: ptgcn.com

This product is exclusively available under Proteintech Group brand and is not available to purchase from any other manufacturer.

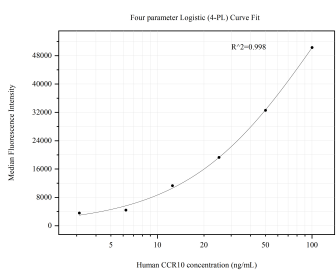
Selected Validation Data



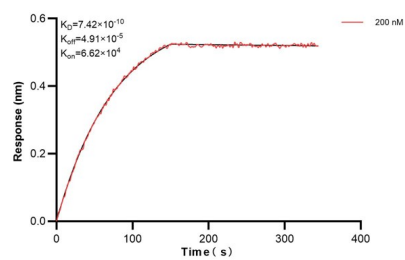
Sandwich ELISA standard curve of MP50812-1, Human CCR10 Monoclonal Matched Antibody Pair - PBS only. 60574-1-PBS was coated to a plate as the capture antibody and incubated with serial dilutions of standard Ag17212. 60574-2-PBS was HRP conjugated as the detection antibody. Range: 0.781-50 ng/mL



The mean CCR10 concentration was determined to be 3,805.97 ng/mL in MCF-7 cell extract based on a 1.3 mg/mL extract load, 4,613.54 ng/mL in Jurkat cell extract based on a 1.9 mg/mL extract load and 1,804.16 ng/mL in A549 cell extract based on a 3.1 mg/mL extract load.



Cytometric bead array standard curve of MP50812-1, CCR10 Monoclonal Matched Antibody Pair, PBS Only. Capture antibody: 60574-1-PBS. Detection antibody: 60574-2-PBS. Standard: Ag17212. Range: 3.125-100 ng/mL



Biolayer interferometry (BLI) kinetic assay of 60574-2-Ig against Human CCR10 was performed. The affinity constant is 0.742 nM.