

For Research Use Only

CEP120 Monoclonal antibody

Catalog Number: 60468-1-Ig



Basic Information

Catalog Number:

60468-1-Ig

Size:

1000 ug/ml

Source:

Mouse

Isotype:

IgG2a

Immunogen Catalog Number:

AG33947

GenBank Accession Number:

BC040527

GeneID (NCBI):

153241

UNIPROT ID:

Q8N960

Full Name:

centrosomal protein 120kDa

Calculated MW:

986 aa, 113 kDa

Observed MW:

120 kDa

Purification Method:

Protein A purification

CloneNo.:

1G12B4

Recommended Dilutions:

WB 1:1000-1:4000

Applications

Tested Applications:

WB, ELISA

Species Specificity:

human

Positive Controls:

WB : A549 cells, HepG2 cells, Jurkat cells, MOLT-4 cells, K-562 cells, IMR-32 cells

Background Information

CEP120 encodes a protein that functions in the microtubule-dependent coupling of the nucleus and the centrosome. It is involved in regulating centrosome-mediated interkinetic nuclear migration of neural progenitors (PMID: 27185865, 23857771). CEP120, SPICE1, and CPAP are required for centriole elongation and for the recruitment of distal microtubule-capping proteins and CEP135 to procentrioles (PMID: 23810536).

Storage

Storage:

Store at -20°C. Stable for one year after shipment.

Storage Buffer:

PBS with 0.02% sodium azide and 50% glycerol pH 7.3.

Aliquoting is unnecessary for -20°C storage

For technical support and original validation data for this product please contact:

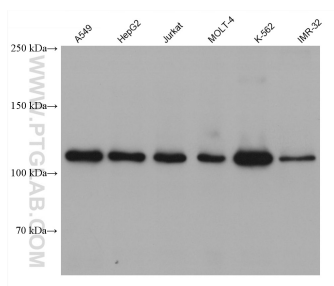
T: 4006900926

E: Proteintech-CN@ptglab.com

W: ptgcn.com

This product is exclusively available under Proteintech Group brand and is not available to purchase from any other manufacturer.

Selected Validation Data



Various lysates were subjected to SDS PAGE followed by western blot with 60468-1-Ig (CEP120 antibody) at dilution of 1:2000 incubated at room temperature for 1.5 hours.