

For Research Use Only

# ATAD1 Monoclonal antibody, PBS Only (Detector)

Catalog Number: 60442-2-PBS



## Basic Information

Catalog Number:

60442-2-PBS

Size:

1 mg/ml

Source:

Mouse

Isotype:

IgG1

Immunogen Catalog Number:

AG10471

GenBank Accession Number:

BC010868

GeneID (NCBI):

84896

UNIPROT ID:

Q8NBU5

Full Name:

ATPase family, AAA domain containing 1

Calculated MW:

361 aa, 41 kDa

Observed MW:

32-37 kDa

Purification Method:

Protein G purification

CloneNo.:

2A2C3

## Applications

Tested Applications:

WB, Cytometric bead array, Indirect ELISA

Species Specificity:

human, mouse, rat, rabbit

## Background Information

The mitochondrial AAA (ATPase Associated with diverse cellular Activities) protein ATAD1 (in humans; Msp1 in yeast) removes mislocalized membrane proteins, as well as stuck import substrates from the mitochondrial outer membrane, facilitating their re-insertion into their cognate organelles and maintaining mitochondria's protein import capacity.

## Storage

Storage:

Store at -80°C.

**The product is shipped with ice packs. Upon receipt, store it immediately at -80°C**

Storage Buffer:

PBS Only

For technical support and original validation data for this product please contact:

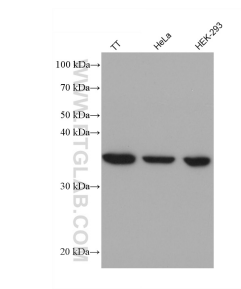
T: 4006900926

E: [Proteintech-CN@ptglab.com](mailto:Proteintech-CN@ptglab.com)

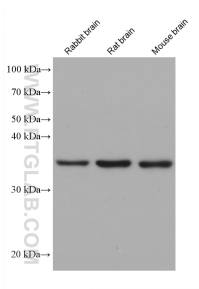
W: [ptgcn.com](http://ptgcn.com)

**This product is exclusively available under Proteintech Group brand and is not available to purchase from any other manufacturer.**

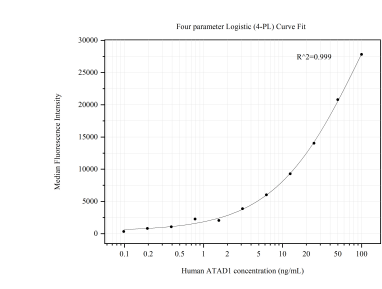
Selected Validation Data



Various lysates were subjected to SDS PAGE followed by western blot with 60442-2-Ig (ATAD1 antibody) at dilution of 1:10000 incubated at room temperature for 1.5 hours. This data was developed using the same antibody clone with 60442-2-PBS in a different storage buffer formulation.



Various lysates were subjected to SDS PAGE followed by western blot with 60442-2-Ig (ATAD1 antibody) at dilution of 1:10000 incubated at room temperature for 1.5 hours. This data was developed using the same antibody clone with 60442-2-PBS in a different storage buffer formulation.



Cytometric bead array standard curve of MP50598-1, ATAD1 Monoclonal Matched Antibody Pair, PBS Only. Capture antibody: 60442-1-PBS. Detection antibody: 60442-2-PBS. Standard:Ag10471. Range: 0.098-100 ng/mL