

# Myocilin Monoclonal antibody

Catalog Number: 60357-1-Ig 9 Publications

## Basic Information

<b>Catalog Number:</b> 60357-1-Ig	<b>GenBank Accession Number:</b> BC029261	<b>Purification Method:</b> Protein A purification
<b>Size:</b> 1100 µg/ml	<b>GeneID (NCBI):</b> 4653	<b>CloneNo.:</b> 4B1F6
<b>Source:</b> Mouse	<b>UNIPROT ID:</b> Q99972	<b>Recommended Dilutions:</b> WB 1:1000-1:8000 IHC 1:50-1:500
<b>Isotype:</b> IgG2a	<b>Full Name:</b> myocilin, trabecular meshwork inducible glucocorticoid response	
<b>Immunogen Catalog Number:</b> AG5492	<b>Calculated MW:</b> 57 kDa	
	<b>Observed MW:</b> 50-57 kDa	

## Applications

<b>Tested Applications:</b> WB, IHC, ELISA	<b>Positive Controls:</b>
<b>Cited Applications:</b> WB, IHC, IF	<b>WB :</b> pig heart tissue, human skeletal muscle tissue, human spleen tissue, rat heart tissue
<b>Species Specificity:</b> human, mouse, pig, rat	<b>IHC :</b> human heart tissue, human skeletal muscle tissue
<b>Cited Species:</b> human, mouse, rat	
<b>Note-IHC: suggested antigen retrieval with TE buffer pH 9.0; (*) Alternatively, antigen retrieval may be performed with citrate buffer pH 6.0</b>	

## Background Information

Myocilin (MYOC), also known as TIGR or GLC1A, is a secreted glycoprotein of the olfactomedin family, originally identified in trabecular meshwork cells after prolonged treatment with glucocorticoids, and, independently, in the retina (PMID: 9176893; 9169133). It may participate in the obstruction of fluid outflow in the trabecular meshwork. Defects in MYOC are the cause of primary open angle glaucoma (POAG) (PMID: 21709622).

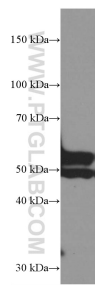
## Notable Publications

Author	Pubmed ID	Journal	Application
Susumu Hara	31060779	Biochem Biophys Res Commun	WB
Yourka D Tchoukalova	35073957	Stem Cell Res Ther	IHC
Dingwen Xu	36049555	Exp Eye Res	WB

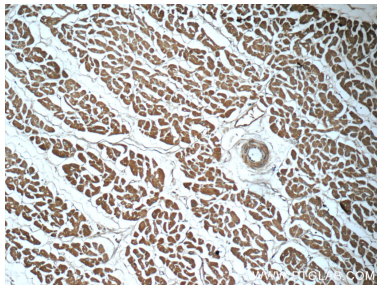
## Storage

**Storage:**  
Store at -20°C. Stable for one year after shipment.  
**Storage Buffer:**  
PBS with 0.02% sodium azide and 50% glycerol pH 7.3.  
Aliquoting is unnecessary for -20°C storage

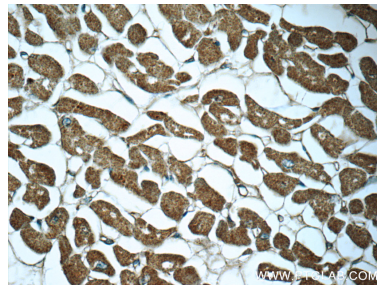
## Selected Validation Data



pig heart tissue were subjected to SDS PAGE followed by western blot with 60357-1-Ig (Myocilin antibody) at dilution of 1:4000 incubated at room temperature for 1.5 hours.



Immunohistochemical analysis of paraffin-embedded human heart tissue slide using 60357-1-Ig (Myocilin antibody) at dilution of 1:50 (under 10x lens).



Immunohistochemical analysis of paraffin-embedded human heart tissue slide using 60357-1-Ig (Myocilin antibody) at dilution of 1:50 (under 40x lens).