

MUM1 Monoclonal antibody

Catalog Number: 60353-1-Ig

1 Publications

Basic Information

Catalog Number:

60353-1-Ig

Size:

1400 µg/ml

Source:

Mouse

Isotype:

IgG2a

Immunogen Catalog Number:

AG3371

GenBank Accession Number:

BC008098

GeneID (NCBI):

84939

UNIPROT ID:

Q2TAK8

Full Name:

melanoma associated antigen
(mutated) 1

Calculated MW:

18 kDa, 79 kDa

Observed MW:

78-80 kDa

Purification Method:

Protein A purification

CloneNo.:

3B1D2

Recommended Dilutions:

WB 1:1000-1:8000

IF/ICC 1:200-1:800

Applications

Tested Applications:

IF/ICC, WB, ELISA

Cited Applications:

IHC

Species Specificity:

human

Cited Species:

human

Positive Controls:

WB : HEK-293 cells, A375 cells, Jurkat cells

IF/ICC : HeLa cells, A375 cells

Background Information

MUM1, also named as EXPAND1, is an architectural component of the chromatin, which in response to DNA damage serves as an accessory factor to promote cell survival. It is a 53BP1-associated DNA damage-responsive factor. MUM1/EXPAND1 is different to another protein IRF4/MUM1.

Notable Publications

Author	Pubmed ID	Journal	Application
Zhou Qi	35875161	Front Oncol	IHC

Storage

Storage:

Store at -20°C. Stable for one year after shipment.

Storage Buffer:

PBS with 0.02% sodium azide and 50% glycerol pH 7.3.

Aliquoting is unnecessary for -20°C storage

For technical support and original validation data for this product please contact:

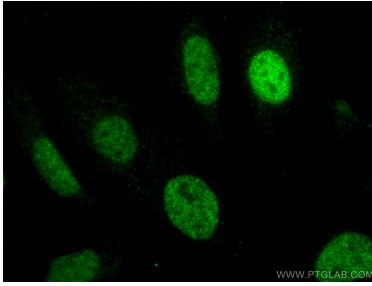
T: 4006900926

E: Proteintech-CN@ptglab.com

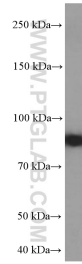
W: ptgcn.com

This product is exclusively available under Proteintech Group brand and is not available to purchase from any other manufacturer.

Selected Validation Data



Immunofluorescent analysis of (4% PFA) fixed HeLa cells using MUM1 antibody (60353-1-Ig, Clone: 3B1D2) at dilution of 1:400 and CoraLite®488-Conjugated AffiniPure Goat Anti-Mouse IgG(H+L).



HEK-293 cells were subjected to SDS PAGE followed by western blot with 60353-1-Ig (MUM1 Antibody) at dilution of 1:4000 incubated at room temperature for 1.5 hours.