

CD41/Integrin alpha 2b Monoclonal antibody, PBS Only

Catalog Number: 60350-1-PBS

Basic Information

Catalog Number:

60350-1-PBS

Size:

1 mg/ml

Source:

Mouse

Isotype:

IgG1

GenBank Accession Number:

BC126442

GeneID (NCBI):

3674

UNIPROT ID:

P08514

Full Name:

integrin, alpha 2b (platelet glycoprotein IIb of IIb/IIIa complex, antigen CD41)

Calculated MW:

113 kDa

Observed MW:

125 kDa

Purification Method:

Protein G purification

CloneNo.:

6D7C5

Applications

Tested Applications:

WB, Indirect ELISA

Species Specificity:

human

Background Information

The integrins are a superfamily of cell adhesion receptors that bind to extracellular matrix ligands, cell-surface ligands, and soluble ligands (PMID: 17543136). They are transmembrane $\alpha\beta$ heterodimers and at least 24 distinct integrin heterodimers are formed by the combination of 18 α and eight β known subunits (PMID: 17543136; 20029421). In addition to mediating cell adhesion, integrins also play important roles in modulating signal transduction pathways that control cellular responses including migration, proliferation, differentiation, and apoptosis (PMID: 19118207). Integrin alpha-IIb (ITGA2B, CD41) is expressed on platelets, megakaryocytes and some hematopoietic progenitor cells (PMID: 11934866). This protein undergoes post-translational cleavage to yield disulfide linked light (25 kDa) and heavy (125 kDa) chains which join with integrin beta3 (CD61) to form a receptor for fibronectin, fibrinogen, plasminogen, prothrombin, thrombospondin and vitronectin. Integrin alpha-IIb/beta-3 is crucial for platelet aggregation through binding of soluble fibrinogen.

Storage

Storage:

Store at -80°C.

The product is shipped with ice packs. Upon receipt, store it immediately at -80°C**Storage Buffer:**

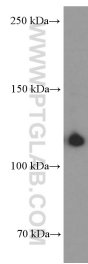
PBS Only

For technical support and original validation data for this product please contact:

T: 4006900926

E: Proteintech-CN@ptglab.comW: ptgcn.com**This product is exclusively available under Proteintech Group brand and is not available to purchase from any other manufacturer.**

Selected Validation Data



human spleen tissue were subjected to SDS PAGE followed by western blot with 60350-1-Ig (CD41/Integrin alpha 2b Antibody) at dilution of 1:1600 incubated at room temperature for 1.5 hours. This data was developed using the same antibody clone with 60350-1-PBS in a different storage buffer formulation.