

For Research Use Only

Gastrin Monoclonal antibody, PBS Only (Capture)

Catalog Number: 60346-1-PBS



Basic Information

Catalog Number:	GenBank Accession Number:	Purification Method:
60346-1-PBS	BC069724	Protein A purification
Size:	GeneID (NCBI):	CloneNo.:
1000 µg/ml	2520	7G9C3
Source:	UNIPROT ID:	
Mouse	P01350	
Isotype:	Full Name:	
IgG2a	gastrin	
Immunogen Catalog Number:	Calculated MW:	
AG12795	101 aa, 11 kDa	

Applications

Tested Applications:
IHC, IF-P, Cytometric bead array, Indirect ELISA

Species Specificity:
human

Background Information

Gastrin is a hormone produced primarily by G-cells in the stomach, where it functions to stimulate acid secretion by gastric parietal cells. Gastrin is a promiscuous hormone. Thus, the gastrin gene is expressed in common cancers such as bronchogenic, colorectal, ovarian and pancreatic carcinomas.

Storage

Storage:
Store at -80°C.

The product is shipped with ice packs. Upon receipt, store it immediately at -80°C

Storage Buffer:
PBS Only

For technical support and original validation data for this product please contact:

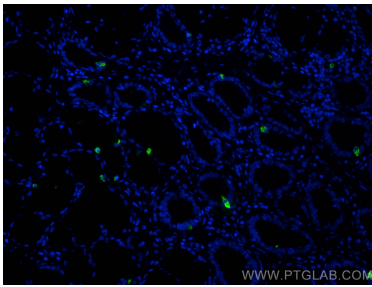
T: 4006900926

E: Proteintech-CN@ptglab.com

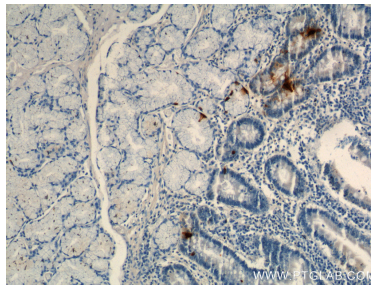
W: ptgcn.com

This product is exclusively available under Proteintech Group brand and is not available to purchase from any other manufacturer.

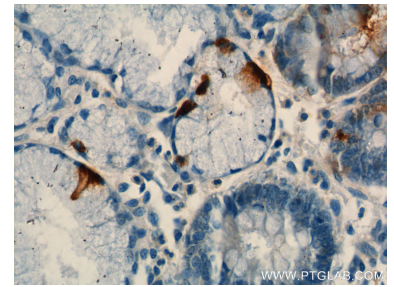
Selected Validation Data



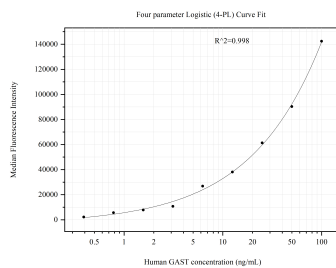
Immunofluorescent analysis of (4% PFA) fixed paraffin-embedded human stomach cancer tissue using Gastrin antibody (60346-1-Ig, Clone: 7G9C3) at dilution of 1:400 and CoraLite®488-Conjugated AffiniPure Goat Anti-Mouse IgG(H+L) (SA00013-1). Heat mediated antigen retrieval with Tris-EDTA buffer (pH 9.0). This data was developed using the same antibody clone with 60346-1-PBS in a different storage buffer formulation.



Immunohistochemical analysis of paraffin-embedded human stomach tissue slide using 60346-1-Ig (Gastrin antibody) at dilution of 1:350 (under 10x lens). This data was developed using the same antibody clone with 60346-1-PBS in a different storage buffer formulation.



Immunohistochemical analysis of paraffin-embedded human stomach tissue slide using 60346-1-Ig (Gastrin antibody) at dilution of 1:350 (under 40x lens). This data was developed using the same antibody clone with 60346-1-PBS in a different storage buffer formulation.



Cytometric bead array standard curve of MP51244-1, GAST Monoclonal Matched Antibody Pair, PBS Only. Capture antibody: 60346-1-PBS. Detection antibody: 60346-2-PBS. Standard: Ag12795. Range: 0.391-100 ng/mL.