

# Prostein Monoclonal antibody

Catalog Number: 60343-1-Ig

## Basic Information

<b>Catalog Number:</b> 60343-1-Ig	<b>GenBank Accession Number:</b> BC050416	<b>Purification Method:</b> Protein A purification
<b>Size:</b> 1900 ug/ml	<b>GeneID (NCBI):</b> 85414	<b>CloneNo.:</b> 5E12E2
<b>Source:</b> Mouse	<b>UNIPROT ID:</b> Q96JT2	<b>Recommended Dilutions:</b> WB 1:1000-1:10000 IHC 1:500-1:2000 IF-P 1:200-1:800
<b>Isotype:</b> IgG2b	<b>Full Name:</b> solute carrier family 45, member 3	
<b>Immunogen Catalog Number:</b> AG5463	<b>Calculated MW:</b> 59 kDa <b>Observed MW:</b> 55-59 kDa	

## Applications

### Tested Applications:

WB, IHC, IF-P, ELISA

### Species Specificity:

human, mouse, rat

**Note-IHC: suggested antigen retrieval with TE buffer pH 9.0; (\*) Alternatively, antigen retrieval may be performed with citrate buffer pH 6.0**

### Positive Controls:

**WB :** rat testis tissue, DU 145 cells, JAR cells, mouse testis tissue

**IHC :** human prostate cancer tissue,

**IF-P :** human prostate cancer tissue,

## Background Information

Prostein is a prostate tissue-specific protein whose expression is highly restricted to normal and cancerous prostate tissues. Anti-prostein is useful for the identification of prostate adenocarcinomas and is a good marker to identify prostatic origin in metastatic cancer.

## Storage

### Storage:

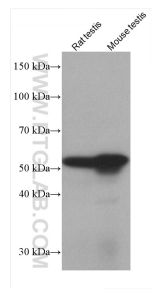
Store at -20°C. Stable for one year after shipment.

### Storage Buffer:

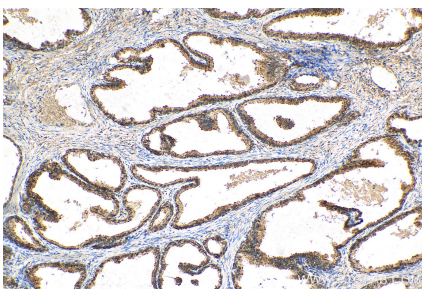
PBS with 0.02% sodium azide and 50% glycerol pH 7.3.

Aliquoting is unnecessary for -20°C storage

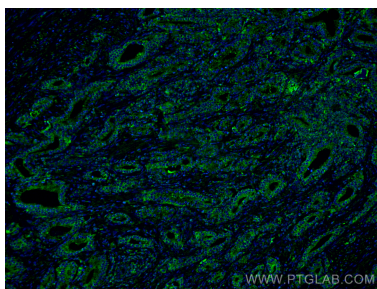
Selected Validation Data



Various lysates were subjected to SDS PAGE followed by western blot with 60343-1-Ig (Prostein antibody) at dilution of 1:10000 incubated at room temperature for 1.5 hours.



Immunohistochemical analysis of paraffin-embedded human prostate cancer tissue slide using 60343-1-Ig (Prostein antibody) at dilution of 1:1000 (under 10x lens). Heat mediated antigen retrieval with Tris-EDTA buffer (pH 9.0).



Immunofluorescent analysis of (4% PFA) fixed human prostate cancer tissue using Prostein antibody (60343-1-Ig, Clone: 5E12E2 ) at dilution of 1:400 and CoraLite®488-Conjugated AffiniPure Goat Anti-Mouse IgG(H+L).



Immunohistochemical analysis of paraffin-embedded human prostate cancer tissue slide using 60343-1-Ig (Prostein antibody) at dilution of 1:2000 (under 40x lens). Heat mediated antigen retrieval with Tris-EDTA buffer (pH 9.0).