

For Research Use Only

# APP Monoclonal antibody, PBS Only

Catalog Number: 60342-1-PBS

Featured Product



## Basic Information

Catalog Number:

60342-1-PBS

Size:

1 mg/ml

Source:

Mouse

Isotype:

IgG2a

Immunogen Catalog Number:

AG0769

GenBank Accession Number:

BC004369

GeneID (NCBI):

351

UNIPROT ID:

P05067

Full Name:

amyloid beta (A4) precursor protein

Calculated MW:

87 kDa

Observed MW:

100 kDa

Purification Method:

Protein A purification

CloneNo.:

5C2A1

## Applications

Tested Applications:

WB, IHC, Indirect ELISA

Species Specificity:

human, rat, pig, rabbit

## Background Information

A $\beta$  derives from APP via proteolytic cleavage by proteases called  $\alpha$ -,  $\beta$ - and  $\gamma$ -secretase. The  $\alpha$ -secretase cleavage precludes the formation of A $\beta$ , while the  $\beta$ - and  $\gamma$ -cleavages generate APP components with amyloidogenic features. Amyloid beta A4 precursor protein (APP), encoded by APP gene which locate on human chromosome 21q, is a cell surface receptor and performs physiological functions on the surface of neurons relevant to neurite growth, neuronal adhesion and axonogenesis. APP expressed in all fetal tissues and is pronounced in brain, kidney, heart and spleen, but weak in liver. Defects in APP are the cause of Alzheimer disease type 1 (AD1).

## Storage

Storage:

Store at -80°C.

The product is shipped with ice packs. Upon receipt, store it immediately at -80°C

Storage Buffer:

PBS Only

For technical support and original validation data for this product please contact:

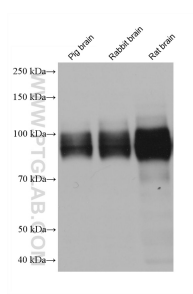
T: 4006900926

E: Proteintech-CN@ptglab.com

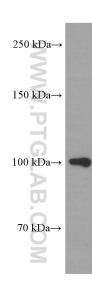
W: ptgcn.com

This product is exclusively available under Proteintech Group brand and is not available to purchase from any other manufacturer.

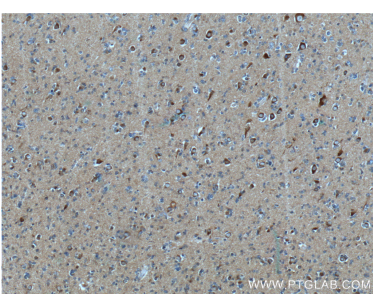
## Selected Validation Data



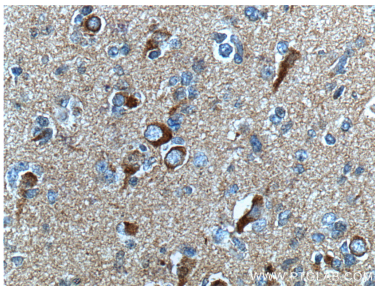
Various lysates were subjected to SDS PAGE followed by western blot with 60342-1-Ig (APP antibody) at dilution of 1:2000 incubated at room temperature for 1.5 hours. This data was developed using the same antibody clone with 60342-1-PBS in a different storage buffer formulation.



Y79 cells were subjected to SDS PAGE followed by western blot with 60342-1-Ig (APP Antibody) at dilution of 1:1000 incubated at room temperature for 1.5 hours. This data was developed using the same antibody clone with 60342-1-PBS in a different storage buffer formulation.



Immunohistochemical analysis of paraffin-embedded human gliomas tissue slide using 60342-1-Ig (APP Antibody) at dilution of 1:200 (under 10x lens). Heat mediated antigen retrieval with Tris-EDTA buffer (pH 9.0). This data was developed using the same antibody clone with 60342-1-PBS in a different storage buffer formulation.



Immunohistochemical analysis of paraffin-embedded human gliomas tissue slide using 60342-1-Ig (APP Antibody) at dilution of 1:200 (under 40x lens). Heat mediated antigen retrieval with Tris-EDTA buffer (pH 9.0). This data was developed using the same antibody clone with 60342-1-PBS in a different storage buffer formulation.