

For Research Use Only

# CX3CL1 Monoclonal antibody

Catalog Number: 60339-1-Ig **3 Publications**



## Basic Information

|                                     |  |   |
|-------------------------------------|--|---|
| Catalog Number:<br>60339-1-Ig       | GenBank Accession Number:<br>BC001163              | Purification Method:<br>Protein G purification              |
| Size:<br>4686 ug/ml                 | GeneID (NCBI):<br>6376                             | CloneNo.:<br>2F5D5  |
| Source:<br>Mouse                    | UNIPROT ID:<br>P78423                              | Recommended Dilutions:<br>WB 1:500-1:2000<br>IHC 1:50-1:500 |
| Isotype:<br>IgG1                    | Full Name:<br>chemokine (C-X3-C motif) ligand 1    |   |
| Immunogen Catalog Number:<br>AG0161 | Calculated MW:<br>42 kDa<br>Observed MW:<br>90 kDa |   |

## Applications

|  |  |
|--|--|
| Tested Applications:<br>WB, IHC, ELISA   | Positive Controls:                                     |
| Cited Applications:<br>WB, IHC, IF   | WB : PC-3 cells,                                       |
| Species Specificity:<br>human  | IHC : human brain tissue, human small intestine tissue |
| Cited Species:<br>human, mouse   |  |
| <b>Note-IHC: suggested antigen retrieval with TE buffer pH 9.0; (*) Alternatively, antigen retrieval may be performed with citrate buffer pH 6.0</b> |  |

## Background Information

### Notable Publications

| Author      | Pubmed ID | Journal       | Application |
|-------------|-----------|---------------|-------------|
| Zi Yang     | 39497829  | Front Immunol | IHC         |
| Chenyang Lu | 37561593  | JCI Insight   | IF          |
| Lu Zheng    | 35352285  | Neurosci Bull | WB,IF       |

## Storage

**Storage:**  
Store at -20°C. Stable for one year after shipment.  
**Storage Buffer:**  
PBS with 0.02% sodium azide and 50% glycerol pH 7.3.  
Aliquoting is unnecessary for -20°C storage

For technical support and original validation data for this product please contact:

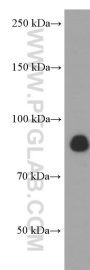
T: 4006900926

E: [Proteintech-CN@ptglab.com](mailto:Proteintech-CN@ptglab.com)

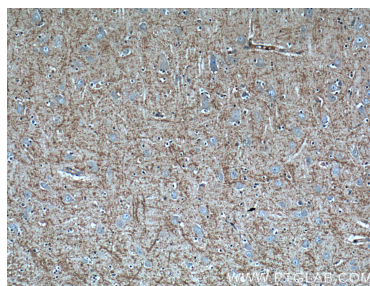
W: [ptgcn.com](http://ptgcn.com)

**This product is exclusively available under Proteintech Group brand and is not available to purchase from any other manufacturer.**

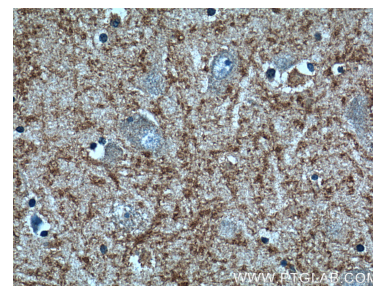
## Selected Validation Data



PC-3 cells were subjected to SDS PAGE followed by western blot with 60339-1-Ig (CX3CL1 antibody) at dilution of 1:1000 incubated at room temperature for 1.5 hours.



Immunohistochemical analysis of paraffin-embedded human brain tissue slide using 60339-1-Ig (CX3CL1 Antibody) at dilution of 1:200 (under 10x lens).



Immunohistochemical analysis of paraffin-embedded human brain tissue slide using 60339-1-Ig (CX3CL1 Antibody) at dilution of 1:200 (under 40x lens).