

For Research Use Only

KLK3/PSA Monoclonal antibody, PBS Only



Catalog Number: 60338-1-PBS

Basic Information

Catalog Number: 60338-1-PBS	GenBank Accession Number: BC005307	Purification Method: Protein A purification
Size: 1 mg/ml	GeneID (NCBI): 354	CloneNo.: 4A1E2
Source: Mouse	UNIPROT ID: P07288	
Isotype: IgG1	Full Name: kallikrein-related peptidase 3	
Immunogen Catalog Number: AG1060	Calculated MW: 29 kDa	
	Observed MW: 30-34 kDa	

Applications

Tested Applications:
WB, Indirect ELISA, IHC

Species Specificity:
human

Background Information

Kallikreins are a subgroup of serine proteases having diverse physiological functions. Growing evidence suggests that many kallikreins are implicated in carcinogenesis and some have potential as novel cancer and other disease biomarkers. kallikrein-related peptidase 3, which is also called PSA (prostate-specific antigen) in the clinical setting, is useful in the diagnosis and monitoring of prostatic carcinoma. KLK3 has 5 isoforms produced by alternative splicing.

Storage

Storage:
Store at -80°C.

The product is shipped with ice packs. Upon receipt, store it immediately at -80°C

Storage Buffer:
PBS Only

For technical support and original validation data for this product please contact:

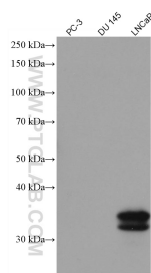
T: 4006900926

E: Proteintech-CN@ptglab.com

W: ptgcn.com

This product is exclusively available under Proteintech Group brand and is not available to purchase from any other manufacturer.

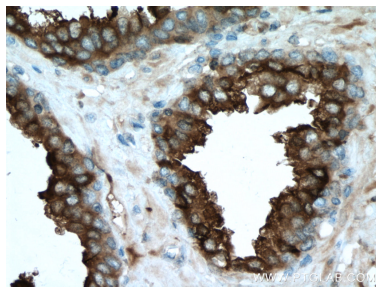
Selected Validation Data



PC-3(PSA-), DU 145(PSA-) and LNCaP (PSA+) cell lysates were subjected to SDS PAGE followed by western blot with 60338-1-Ig (KLK3/PSA antibody) at dilution of 1:1000 incubated at room temperature for 1.5 hours. This data was developed using the same antibody clone with 60338-1-PBS in a different storage buffer formulation.



Immunohistochemical analysis of paraffin-embedded human prostate cancer tissue slide using 60338-1-Ig (KLK3/PSA antibody) at dilution of 1:5000 (under 10x lens). Heat mediated antigen retrieval with Tris-EDTA buffer (pH 9.0). This data was developed using the same antibody clone with 60338-1-PBS in a different storage buffer formulation.



Immunohistochemical analysis of paraffin-embedded human prostate cancer tissue slide using 60338-1-Ig (KLK3/PSA antibody) at dilution of 1:5000 (under 40x lens). Heat mediated antigen retrieval with Tris-EDTA buffer (pH 9.0). This data was developed using the same antibody clone with 60338-1-PBS in a different storage buffer formulation.