

For Research Use Only

TMEM106B Monoclonal antibody, PBS Only (Detector)

Catalog Number: 60333-3-PBS



Basic Information

Catalog Number:

60333-3-PBS

Concentration:

1000 µg/ml

Source:

Mouse

Isotype:

IgG2a

Immunogen Catalog Number:

AG21448

GenBank Accession Number:

BC033901

GeneID (NCBI):

54664

UNIPROT ID:

Q9NUM4

Full Name:

transmembrane protein 106B

Calculated MW:

31 kDa

Purification Method:

Protein A purification

CloneNo.:

4C9C11

Applications

Tested Applications:

Cytometric bead array, Sandwich ELISA, Indirect ELISA, Sample test

Species Specificity:

human

Background Information

Storage

Storage:

Store at -80°C.

The product is shipped with ice packs. Upon receipt, store it immediately at -80°C

Storage Buffer:

PBS Only

For technical support and original validation data for this product please contact:

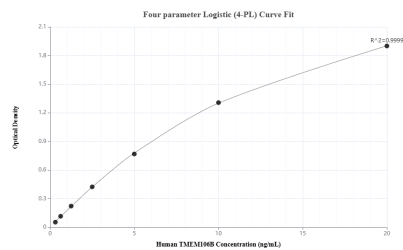
T: 4006900926

E: Proteintech-CN@ptglab.com

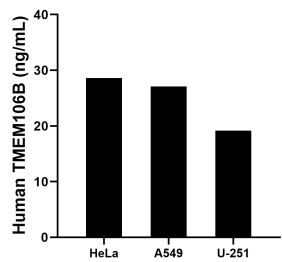
W: ptgcn.com

This product is exclusively available under Proteintech Group brand and is not available to purchase from any other manufacturer.

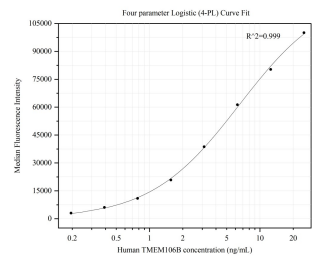
Selected Validation Data



Sandwich ELISA standard curve of MP50326-1, Human TMEM106B Monoclonal Matched Antibody Pair - PBS only. 60333-2-PBS was coated to a plate as the capture antibody and incubated with serial dilutions of standard Ag21448. 60333-3-PBS was HRP conjugated as the detection antibody. Range: 0.313-20 ng/mL



The mean TMEM106B concentration was determined to be 28.61 ng/mL in HeLa cell extract based on a 2.1 mg/mL extract load, 27.06 ng/mL in A549 cell extract based on a 1.5 mg/mL extract load and 19.17 ng/mL in U-251 cell extract based on a 1.4 mg/mL extract load.



Cytometric bead array standard curve of MP50326-1, TMEM106B Monoclonal Matched Antibody Pair, PBS Only. Capture antibody: 60333-2-PBS. Detection antibody: 60333-3-PBS. Standard: Ag21448. Range: 0.195-25 ng/mL