

For Research Use Only

# p63 Monoclonal antibody, PBS Only (Detector)

Catalog Number: 60332-4-PBS



## Basic Information

Catalog Number:

60332-4-PBS

Concentration:

1 mg/ml

Source:

Mouse

Isotype:

IgG1

Immunogen Catalog Number:

AG2791

GenBank Accession Number:

BC039815

GeneID (NCBI):

8626

UNIPROT ID:

Q9H3D4

Full Name:

tumor protein p63

Calculated MW:

680 aa, 77 kDa

Purification Method:

Protein G Magarose purification

CloneNo.:

1H10H7

## Applications

Tested Applications:

IF/ICC, Cytometric bead array, Sandwich ELISA,  
Indirect ELISA, Sample test

Species Specificity:

human

## Background Information

### Storage

Storage:

Store at -80°C.

**The product is shipped with ice packs. Upon receipt, store it immediately at -80°C**

Storage Buffer:

PBS Only

For technical support and original validation data for this product please contact:

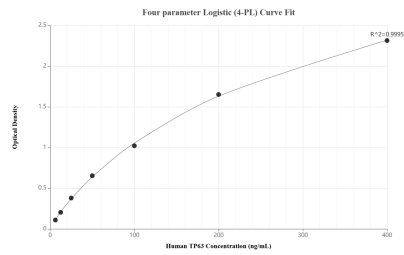
T: 4006900926

E: [Proteintech-CN@ptglab.com](mailto:Proteintech-CN@ptglab.com)

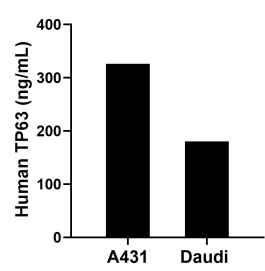
W: [ptgcn.com](http://ptgcn.com)

**This product is exclusively available under Proteintech Group brand and is not available to purchase from any other manufacturer.**

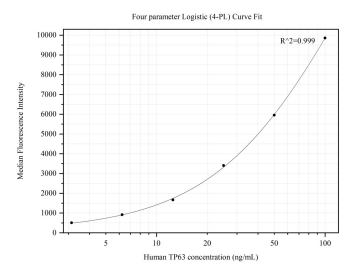
# Selected Validation Data



Sandwich ELISA standard curve of MP50229-1, Human TP63 Monoclonal Matched Antibody Pair - PBS only. 60332-3-PBS was coated to a plate as the capture antibody and incubated with serial dilutions of standard Ag2791. 60332-4-PBS was HRP conjugated as the detection antibody. Range: 6.25-400 ng/mL.



The mean TP63 concentration was determined to be 326.00 ng/mL in A431 cell extract based on a 1.50 mg/mL extract load and 180.00 ng/mL in Daudi cell extract based on a 1.80 mg/mL extract load.



Cytometric bead array standard curve of MP50229-1, TP63 Monoclonal Matched Antibody Pair, PBS Only. Capture antibody: 60332-3-PBS. Detection antibody: 60332-4-PBS. Standard: Ag2791. Range: 3.125-100 ng/mL.