

For Research Use Only

# NF-H/NF200 Monoclonal antibody, PBS Only

Catalog Number: 60331-1-PBS



## Basic Information

Catalog Number: 60331-1-PBS	GenBank Accession Number: BC014185	Purification Method: Protein A purification
Source: Mouse	GeneID (NCBI): 4744	CloneNo.: 1A3C7
Isotype: IgG2a	UNIPROT ID: P12036	
Immunogen Catalog Number: AG13517	Full Name: neurofilament, heavy polypeptide	
	Calculated MW: 112 kDa	
	Observed MW: 200 kDa	

## Applications

**Tested Applications:**  
WB, IHC, IF-P, IF-Fro, FC (Intra), ELISA

**Species Specificity:**  
human, mouse, rat, pig

## Background Information

NEFH, also named as KIAA0845 and NFH, Belongs to the intermediate filament family. It has an important function in mature axons that is not subserved by the two smaller NF proteins. Neurofilaments are the 10nm intermediate filaments found specifically in neurons. They are a major component of the cell's cytoskeleton, and provide support for normal axonal radial growth. Neurofilaments usually contain three intermediate filament proteins: L, M, and H which are involved in the maintenance of neuronal caliber. The names given to the three major neurofilament subunits are based upon the apparent molecular weight of the mammalian subunits on SDS-PAGE: NF-L, 65-68 kDa; NF-M, 145-160 kDa and NF-H, 200-220 kDa. This antibody recognize NEFH only.

## Storage

**Storage:**  
Store at -80°C.  
**The product is shipped with ice packs. Upon receipt, store it immediately at -80°C**

**Storage Buffer:**  
PBS only, pH7.3

For technical support and original validation data for this product please contact:

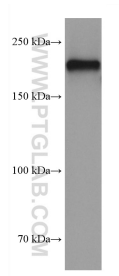
T: 4006900926

E: [Proteintech-CN@ptglab.com](mailto:Proteintech-CN@ptglab.com)

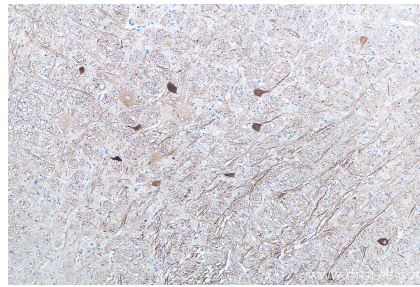
W: [ptgcn.com](http://ptgcn.com)

**This product is exclusively available under Proteintech Group brand and is not available to purchase from any other manufacturer.**

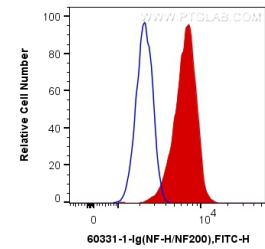
## Selected Validation Data



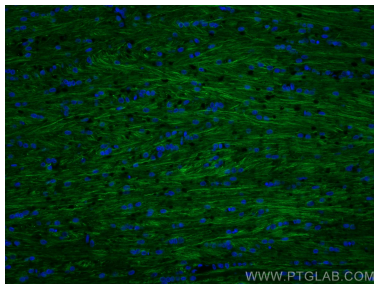
pig cerebellum tissue were subjected to SDS PAGE followed by western blot with 60331-1-Ig (NF-H antibody) at dilution of 1:10000 incubated at room temperature for 1.5 hours. This data was developed using the same antibody clone with 60331-1-PBS in a different storage buffer formulation.



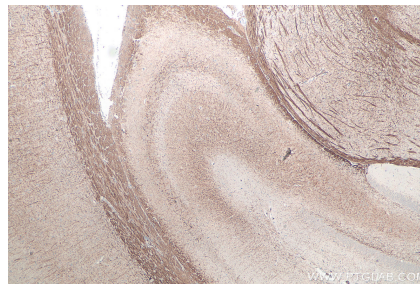
Immunohistochemical analysis of paraffin-embedded rat cerebellum tissue slide using 60331-1-Ig (NF-H antibody) at dilution of 1:8000 (under 10x lens). Heat mediated antigen retrieval with Tris-EDTA buffer (pH 9.0). This data was developed using the same antibody clone with 60331-1-PBS in a different storage buffer formulation.



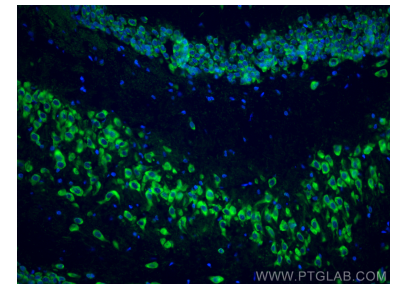
1X10<sup>6</sup> SH-SY5Y cells were intracellularly stained with 0.2 ug Anti-Human NF-H/NF200 (60331-1-Ig, Clone:1A3C7) and CoraLite®488-Conjugated AffiniPure Goat Anti-Mouse IgG(H+L) at dilution 1:1000 (red), or 0.2 ug Control Antibody. Cells were fixed with 4% PFA and permeabilized with Flow Cytometry Perm Buffer. This data was developed using the same antibody clone with 60331-1-PBS in a different storage buffer formulation.



Immunofluorescent analysis of (4% PFA) fixed rat brain tissue using NF-H/NF200 antibody (60331-1-Ig, Clone: 1A3C7 ) at dilution of 1:400 and CoraLite®488-Conjugated AffiniPure Goat Anti-Mouse IgG(H+L). This data was developed using the same antibody clone with 60331-1-PBS in a different storage buffer formulation.



Immunohistochemical analysis of paraffin-embedded rat brain tissue slide using 60331-1-Ig (NF-H antibody) at dilution of 1:2000 (under 4x lens). Heat mediated antigen retrieval with Tris-EDTA buffer (pH 9.0). This data was developed using the same antibody clone with 60331-1-PBS in a different storage buffer formulation.



Immunofluorescent analysis of (4% PFA) fixed frozen OCT-embedded rat brain tissue using NF-H/NF200 antibody (60331-1-Ig, Clone: 1A3C7 ) at dilution of 1:800 and CoraLite®488-Conjugated Goat Anti-Mouse IgG(H+L) (SA00013-1). This data was developed using the same antibody clone with 60331-1-PBS in a different storage buffer formulation.