

For Research Use Only

EEF1B2 Monoclonal antibody, PBS Only

Catalog Number: 60329-1-PBS

Featured Product



Basic Information

Catalog Number:

60329-1-PBS

Concentration:

1mg/ml

Source:

Mouse

Isotype:

IgG1

Immunogen Catalog Number:

AG0135

GenBank Accession Number:

BC000211

GeneID (NCBI):

1933

UNIPROT ID:

P24534

Full Name:

eukaryotic translation elongation factor 1 beta 2

Calculated MW:

25 kDa

Observed MW:

30-34 kDa

Purification Method:

Protein G purification

CloneNo.:

3E1C11

Applications

Tested Applications:

WB, IHC, IF/ICC, Indirect ELISA

Species Specificity:

human, mouse, rat, pig, rabbit

Background Information

In eukaryotes, the translation elongation factor eEF1A responsible for transporting amino-acylated tRNA to the ribosome forms a higher-order complex, eEF1H, with its guanine-nucleotide-exchange factor eEF1B. eEF1B consists of three subunits: eEF1B alpha, eEF1B beta and eEF1B gamma. The eEF1B2 possess the nucleotide-exchange activity. Although several models on the basis of in vitro experiments have been proposed for the macromolecular organization of the eEF1H complex, these models differ in various aspects. The human eukaryote elongation factor 1 beta 2 (eEF1B2) migrated as a 30-34 kDa protein in SDS-PAGE.

Storage

Storage:

Store at -80°C.

The product is shipped with ice packs. Upon receipt, store it immediately at -80°C

Storage Buffer:

PBS only, pH7.3

For technical support and original validation data for this product please contact:

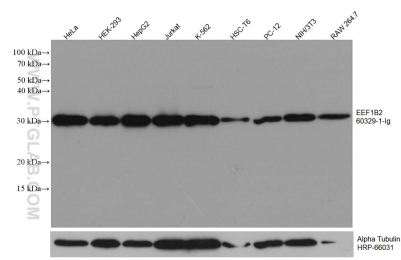
T: 4006900926

E: Proteintech-CN@ptglab.com

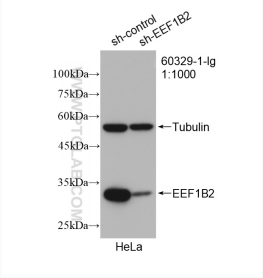
W: ptgcn.com

This product is exclusively available under Proteintech Group brand and is not available to purchase from any other manufacturer.

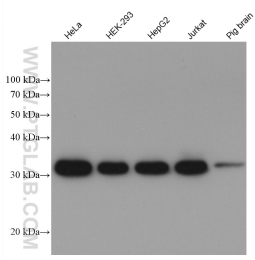
Selected Validation Data



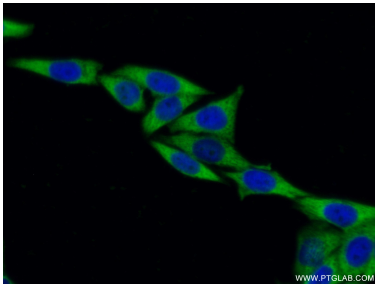
Various lysates were subjected to SDS PAGE followed by western blot with 60329-1-Ig (EEF1B2 antibody) at dilution of 1:2900 incubated at room temperature for 1.5 hours. This data was developed using the same antibody clone with 60329-1-PBS in a different storage buffer formulation.



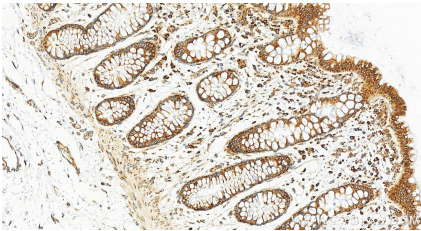
WB result of EEF1B2 antibody (60329-1-Ig; 1:1000; incubated at room temperature for 1.5 hours) with sh-Control and sh-EEF1B2 transfected HeLa cells. This data was developed using the same antibody clone with 60329-1-PBS in a different storage buffer formulation.



Various lysates were subjected to SDS PAGE followed by western blot with 60329-1-Ig (EEF1B2 antibody) at dilution of 1:10000 incubated at room temperature for 1.5 hours. This data was developed using the same antibody clone with 60329-1-PBS in a different storage buffer formulation.



Immunofluorescent analysis of (-20°C Ethanol) fixed HeLa cells using 60329-1-Ig(EEF1B2 antibody) at dilution of 1:100 and Alexa Fluor 488-conjugated AffiniPure Goat Anti-Mouse IgG(H+L). This data was developed using the same antibody clone with 60329-1-PBS in a different storage buffer formulation.



Immunohistochemical analysis of paraffin-embedded human colon tissue slide using 60329-1-Ig (EEF1B2 antibody) at dilution of 1:200 (under 20x lens). Heat mediated antigen retrieval with Tris-EDTA buffer (pH 9.0). This data was developed using the same antibody clone with 60329-1-PBS in a different storage buffer formulation.