

For Research Use Only

FGFR1 Monoclonal antibody, PBS Only (Detector)

Catalog Number: 60325-1-PBS



Basic Information

Catalog Number: 60325-1-PBS	GenBank Accession Number: BC018128	Purification Method: Protein A purification
Size: 1000 µg/ml	GeneID (NCBI): 2260	CloneNo.: 10F12E7
Source: Mouse	UNIPROT ID: P11362	
Isotype: IgG2c	Full Name: fibroblast growth factor receptor 1	
Immunogen Catalog Number: AG3646	Calculated MW: 820 aa, 91 kDa	
	Observed MW: 91 kDa	

Applications

Tested Applications:
WB, IHC, IF/ICC, FC (Intra), Cytometric bead array, Indirect ELISA

Species Specificity:
human

Background Information

Fibroblast growth factor receptor 1 (FGFR1) is a tyrosine-protein kinase that acts as a cell-surface receptor for fibroblast growth factors. FGFR1 has been implicated in diverse biological processes including embryonic development, cell proliferation, differentiation, migration, and tumorigenesis. Mutations in the FGFR1 gene have been associated with Pfeiffer syndrome, Jackson-Weiss syndrome, Antley-Bixler syndrome, osteoglophonic dysplasia, squamous cell lung cancer, and autosomal dominant Kallmann syndrome. Alternatively spliced variants that encode different protein isoforms have been described.

Storage

Storage:
Store at -80°C.
The product is shipped with ice packs. Upon receipt, store it immediately at -80°C

Storage Buffer:
PBS Only

For technical support and original validation data for this product please contact:

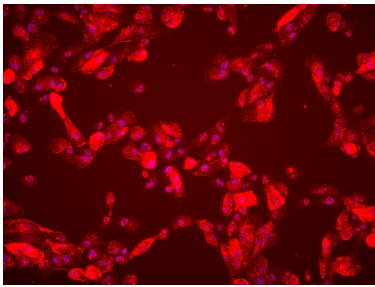
T: 4006900926

E: Proteintech-CN@ptglab.com

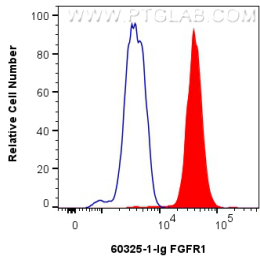
W: ptgcn.com

This product is exclusively available under Proteintech Group brand and is not available to purchase from any other manufacturer.

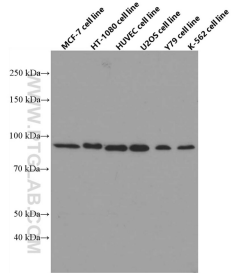
Selected Validation Data



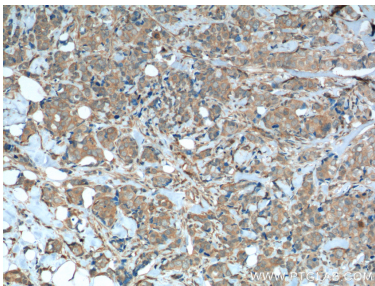
Immunofluorescent analysis of (4% PFA) fixed ACHN cells using FGFR1 antibody (60325-1-Ig, Clone: 10F12E7) at dilution of 1:1000 and Multi-rAb CoraLite® Plus 594-Goat Anti-Mouse Recombinant Secondary Antibody (H+L) (Cat.NO. RGAM004). This data was developed using the same antibody clone with 60325-1-PBS in a different storage buffer formulation.



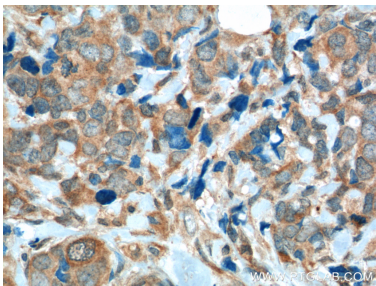
1x10⁶ K-562 cells were intracellularly stained with 0.2 ug FGFR1 Monoclonal antibody (60325-1-Ig, Clone:10F12E7) and CoraLite®488-Conjugated Goat Anti-Mouse IgG(H+L) (SA00013-1)(red), or 0.2 ug Control Antibody (blue). Cells were fixed with 4% PFA and permeabilized with Flow Cytometry Perm Buffer (PF00011-C). This data was developed using the same antibody clone with 60325-1-PBS in a different storage buffer formulation.



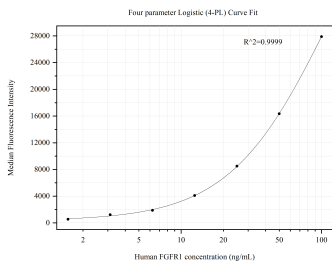
MCF-7, HT-1080, HUVEC, U2OS, Y79, and K-562 cells were subjected to SDS PAGE followed by western blot with 60325-1-Ig (FGFR1 antibody) at dilution of 1:3000 incubated at room temperature for 1.5 hours. This data was developed using the same antibody clone with 60325-1-PBS in a different storage buffer formulation.



Immunohistochemical analysis of paraffin-embedded human breast cancer tissue slide using 60325-1-Ig (FGFR1 Antibody) at dilution of 1:200 (under 10x lens). Heat mediated antigen retrieval with Tris-EDTA buffer (pH 9.0). This data was developed using the same antibody clone with 60325-1-PBS in a different storage buffer formulation.



Immunohistochemical analysis of paraffin-embedded human breast cancer tissue slide using 60325-1-Ig (FGFR1 Antibody) at dilution of 1:200 (under 40x lens). Heat mediated antigen retrieval with Tris-EDTA buffer (pH 9.0). This data was developed using the same antibody clone with 60325-1-PBS in a different storage buffer formulation.



Cytometric bead array standard curve of MP50453-3, FGFR1 Monoclonal Matched Antibody Pair, PBS Only. Capture antibody: 68982-1-PBS. Detection antibody: 60325-1-PBS. Standard:Ag31801. Range: 1.563-100 ng/mL