

# CREST Monoclonal antibody, PBS Only

Catalog Number: 60314-1-PBS

## Basic Information

## Catalog Number:

60314-1-PBS

## Size:

1 mg/ml

## Source:

Mouse

## Isotype:

IgG1

## Immunogen Catalog Number:

AG3119

## GenBank Accession Number:

BC034494

## GeneID (NCBI):

26039

## UNIPROT ID:

O75177

## Full Name:

synovial sarcoma translocation gene  
on chromosome 18-like 1

## Calculated MW:

396 aa, 43 kDa

## Observed MW:

50 kDa

## Purification Method:

Protein G purification

## CloneNo.:

3D5D10

## Applications

## Tested Applications:

WB, Indirect ELISA

## Species Specificity:

human, rat, mouse

## Background Information

SS18-like 1 (SS18L1) is a transcriptional activator that is required for calcium-dependent dendritic growth and branching in cortical neurons. It's also a nuclear protein interacts with CREB-binding protein and expressed in the developing brain. It helps regulate neuronal morphogenesis in calcium-dependent manner. The N-terminal domain of SS18L1 is required for suppressing transactivation in the basal state, while the C-terminal domain is required for calcium-induced transactivation. It's part of the CREST-BRG1 complex, a multiprotein complex that regulates promoter activation by orchestrating a calcium-dependent release of a repressor complex and a recruitment of an activator complex. This complex also binds to the NR2B promoter, and activity-dependent induction of NR2B expression involves a release of HDAC1 and recruitment of CREBBP. The calculated molecular weight of CREST is about 43 kDa, but the modified of CREST protein is 55 kDa (PMID: 25888396).

## Storage

## Storage:

Store at -80°C.

**The product is shipped with ice packs. Upon receipt, store it immediately at -80°C**

## Storage Buffer:

PBS Only

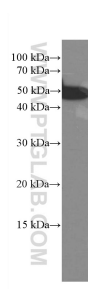
For technical support and original validation data for this product please contact:

T: 4006900926

E: [Proteintech-CN@ptglab.com](mailto:Proteintech-CN@ptglab.com)W: [ptgcn.com](http://ptgcn.com)

**This product is exclusively available under Proteintech Group brand and is not available to purchase from any other manufacturer.**

## Selected Validation Data



NIH/3T3 cells were subjected to SDS PAGE followed by western blot with 60314-1-Ig (CREST antibody) at dilution of 1:3000 incubated at room temperature for 1.5 hours. This data was developed using the same antibody clone with 60314-1-PBS in a different storage buffer formulation.