

For Research Use Only

# CDK2 Monoclonal antibody

Catalog Number: 60312-1-Ig **24 Publications**



## Basic Information

<b>Catalog Number:</b> 60312-1-Ig	<b>GenBank Accession Number:</b> BC003065	<b>Purification Method:</b> Caprylic acid/ammonium sulfate precipitation
<b>Concentration:</b> 1000 ug/ml	<b>GeneID (NCBI):</b> 1017	<b>CloneNo.:</b> 4E2E10
<b>Source:</b> Mouse	<b>UNIPROT ID:</b> P24941	<b>Recommended Dilutions:</b> WB: 1:500-1:2000 IHC: 1:20-1:200 IF/ICC: 1:400-1:1600 FC (Intra): 0.25 ug per 10 <sup>6</sup> cells in a 100 µl suspension
<b>Isotype:</b> IgM	<b>Full Name:</b> cyclin-dependent kinase 2	
<b>Immunogen Catalog Number:</b> AG21310	<b>Calculated MW:</b> 33 kDa	
	<b>Observed MW:</b> 30 kDa	

## Applications

<b>Tested Applications:</b> WB, IHC, IF/ICC, FC (Intra), ELISA	<b>Positive Controls:</b> WB : K-562 cells, IHC : human lymphoma tissue, human cervical cancer tissue IF/ICC : HeLa cells, FC (Intra) : HepG2 cells,
<b>Cited Applications:</b> WB, IHC	
<b>Species Specificity:</b> human	
<b>Cited Species:</b> human, mouse, bovine	
<b>Note-IHC: suggested antigen retrieval with TE buffer pH 9.0; (*) Alternatively, antigen retrieval may be performed with citrate buffer pH 6.0</b>	

## Background Information

CDK2(Cyclin-dependent kinase 2) is also named as CDKN2 and belongs to the protein kinase superfamily,CMGC Ser/Thr protein kinase family, CDC2/CDKX subfamily.It is involved in the control of the cell cycle; essential for meiosis, but dispensable for mitosis.It has 2 isoforms produced by alternative splicing.

## Notable Publications

Author	Pubmed ID	Journal	Application
Jingwen Tan	36208777	Chem Biol Interact	WB
Chenxiang Qi	34650666	Oxid Med Cell Longev	WB
Mengqi Cui	34602553	Biol Pharm Bull	WB

## Storage

**Storage:**  
Store at -20°C. Stable for one year after shipment.  
**Storage Buffer:**  
PBS with 0.02% sodium azide and 50% glycerol, pH7.3  
Aliquoting is unnecessary for -20°C storage

For technical support and original validation data for this product please contact:

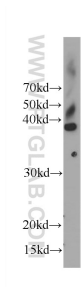
T: 4006900926

E: [Proteintech-CN@ptglab.com](mailto:Proteintech-CN@ptglab.com)

W: [ptgcn.com](http://ptgcn.com)

**This product is exclusively available under Proteintech Group brand and is not available to purchase from any other manufacturer.**

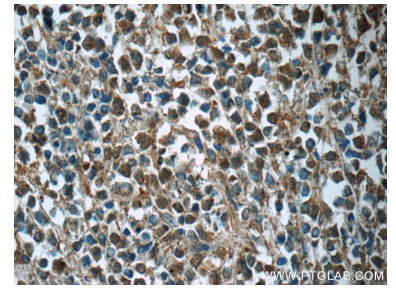
## Selected Validation Data



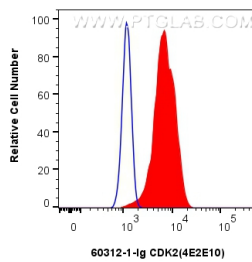
K-562 cells were subjected to SDS PAGE followed by western blot with 60312-1-Ig (CDK2 Antibody) at dilution of 1:1000 incubated at room temperature for 1.5 hours.



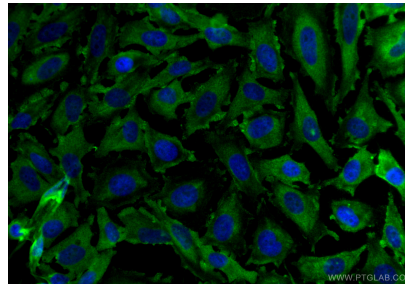
Immunohistochemical analysis of paraffin-embedded human lymphoma tissue slide using 60312-1-Ig (CDK2 Antibody) at dilution of 1:50 (under 10x lens).



Immunohistochemical analysis of paraffin-embedded human lymphoma tissue slide using 60312-1-Ig (CDK2 Antibody) at dilution of 1:50 (under 40x lens).



$1 \times 10^6$  HepG2 cells were intracellularly stained with 0.25  $\mu$ g CDK2 Monoclonal antibody (60312-1-Ig, Clone:4E2E10) and CoraLite®488-Conjugated Goat Anti-Mouse IgG(H+L) (SA00013-1)(red), or 0.25  $\mu$ g Isotype Control (blue). Cells were fixed with 4% PFA and permeabilized with Flow Cytometry Perm Buffer (PF00011-C).



Immunofluorescent analysis of (4% PFA) fixed HeLa cells using CDK2 antibody (60312-1-Ig, Clone: 4E2E10 ) at dilution of 1:800 and CoraLite®488-Conjugated Goat Anti-Mouse IgG(H+L) (SA00013-1).