

For Research Use Only

HER2/ErbB2 Monoclonal antibody, PBS Only

Catalog Number: 60311-1-PBS



Basic Information

Catalog Number:

60311-1-PBS

Size:

1000 ug/ml

Source:

Mouse

Isotype:

IgG2b

Immunogen Catalog Number:

AG16463

GenBank Accession Number:

BC156755

GeneID (NCBI):

2064

UNIPROT ID:

P04626

Full Name:

v-erb-b2 erythroblastic leukemia
viral oncogene homolog 2,
neuro/glioblastoma derived
oncogene homolog (avian)

Calculated MW:

1255 aa, 138 kDa

Purification Method:

Protein A purification

CloneNo.:

1B12A7

Applications

Tested Applications:

IHC, IF-P, ELISA

Species Specificity:

human

Background Information

HER2, ErbB2, and Neu is a 185-kDa transmembrane glycoprotein member of the epidermal growth factor (EGF) receptor family of receptor tyrosine kinases. It has no ligand-binding domain and therefore cannot bind growth factors. However, it does bind tightly to other ligand-bound EGF receptor family members to form a heterodimer, stabilizing ligand binding and enhancing kinase-mediated activation of downstream signalling pathways, such as those involving mitogen-activated protein kinase and phosphatidylinositol-3 kinase. Amplification and/or overexpression of HER2 have been reported in numerous cancers, including breast and ovarian tumors. HER2 is a therapeutic target for the treatment of breast cancer and other carcinomas.

Storage

Storage:

Store at -80°C.

The product is shipped with ice packs. Upon receipt, store it immediately at -80°C

Storage Buffer:

PBS Only

For technical support and original validation data for this product please contact:

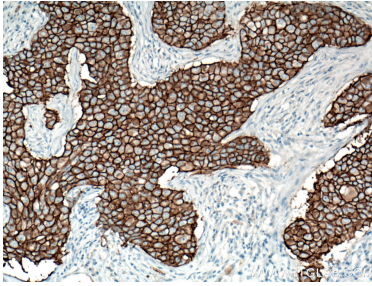
T: 4006900926

E: Proteintech-CN@ptglab.com

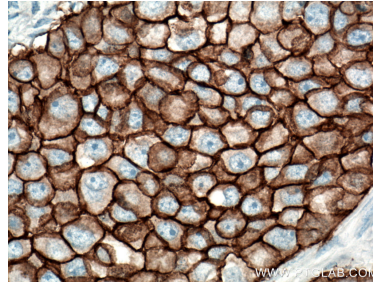
W: ptgcn.com

This product is exclusively available under Proteintech Group brand and is not available to purchase from any other manufacturer.

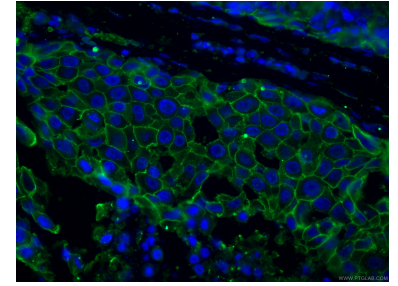
Selected Validation Data



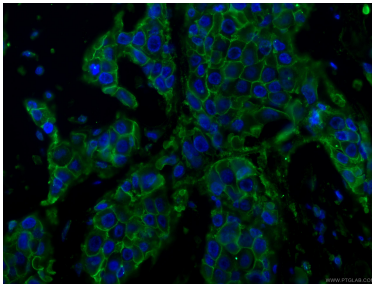
Immunohistochemical analysis of paraffin-embedded human breast cancer tissue slide using 60311-1-Ig (HER2/ErbB2 antibody) at dilution of 1:1600 (under 10x lens). Heat mediated antigen retrieval with Tris-EDTA buffer (pH 9.0). This data was developed using the same antibody clone with 60311-1-PBS in a different storage buffer formulation.



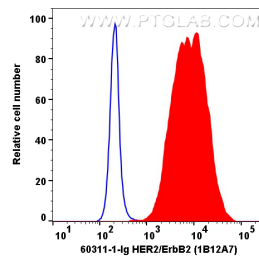
Immunohistochemical analysis of paraffin-embedded human breast cancer tissue slide using 60311-1-Ig (HER2/ErbB2 antibody) at dilution of 1:1600 (under 40x lens). Heat mediated antigen retrieval with Tris-EDTA buffer (pH 9.0). This data was developed using the same antibody clone with 60311-1-PBS in a different storage buffer formulation.



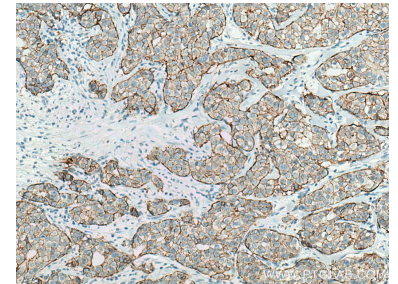
Immunofluorescent analysis of (4% PFA) fixed human breast cancer tissue using 60311-1-Ig (HER2/ErbB2 antibody), at dilution of 1:200 and CoraLite®488-Conjugated AffiniPure Goat Anti-Mouse IgG(H+L). This data was developed using the same antibody clone with 60311-1-PBS in a different storage buffer formulation.



Immunofluorescent analysis of (4% PFA) fixed human breast cancer tissue using 60311-1-Ig (HER2/ErbB2 antibody), at dilution of 1:200 and CoraLite®488-Conjugated AffiniPure Goat Anti-Mouse IgG(H+L). This data was developed using the same antibody clone with 60311-1-PBS in a different storage buffer formulation.



1x10⁶ SK-BR-3 cells were surface stained with 0.2 μ g HER2/ErbB2 Monoclonal antibody (60311-1-Ig, Clone: 1B12A7) and CoraLite® Plus 647-Goat Anti-Mouse Recombinant Secondary Antibody (H+L) (Cat.NO.RGAM005). Mouse IgG2b isotype control (66360-3-Ig, Clone: 11B8C4) was parallel stained as control. Cells were not fixed. This data was developed using the same antibody clone with 60311-1-PBS in a different storage buffer formulation.



Immunohistochemical analysis of paraffin-embedded human breast cancer tissue slide using 60311-1-Ig (HER2/ErbB2 antibody) at dilution of 1:40000 (under 10x lens). Heat mediated antigen retrieval with Tris-EDTA buffer (pH 9.0). This data was developed using the same antibody clone with 60311-1-PBS in a different storage buffer formulation.