

For Research Use Only

pan Ras Monoclonal antibody, PBS Only (Capture/Detector)

Catalog Number: 60309-1-PBS

Featured Product



Basic Information

Catalog Number:

60309-1-PBS

Size:

1mg/ml

Source:

Mouse

Isotype:

IgG1

Immunogen Catalog Number:

AG2700

GenBank Accession Number:

BC013572

GeneID (NCBI):

3845

UNIPROT ID:

P01116

Full Name:

v-Ki-ras2 Kirsten rat sarcoma viral
oncogene homolog

Calculated MW:

188 aa, 21 kDa

Observed MW:

21 kDa

Purification Method:

Protein A purification

CloneNo.:

4H4G7

Applications

Tested Applications:

WB, IHC, IF/ICC, FC (Intra), IP, Cytometric bead array,
Indirect ELISA

Species Specificity:

human, mouse, rat, pig, rabbit, chicken

Background Information

The 21 kDa guanine-nucleotide binding proteins (K-Ras, H-Ras, and N-Ras) belong to the Ras oncogene family, whose members are related to the transforming genes of mammalian sarcoma retroviruses. K-Ras, H-Ras, and N-Ras have similar structure and sequences. These proteins can bind GTP and GDP, and they have intrinsic GTPase activity. The ras genes are ubiquitously expressed although mRNA analysis suggests different level expression in tissue. Mutations in each ras gene frequently were found in different tumors, suggesting their involvement in the development of specific neoplasia. This antibody can recognize K-Ras, H-Ras, and N-Ras.

Storage

Storage:

Store at -80°C.

The product is shipped with ice packs. Upon receipt, store it immediately at -80°C

Storage Buffer:

PBS Only

For technical support and original validation data for this product please contact:

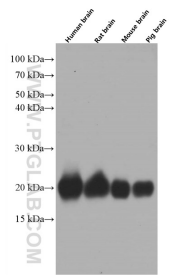
T: 4006900926

E: Proteintech-CN@ptglab.com

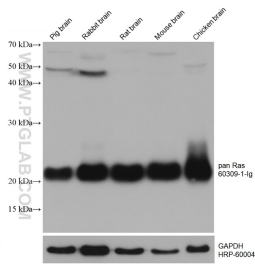
W: ptgcn.com

This product is exclusively available under Proteintech Group brand and is not available to purchase from any other manufacturer.

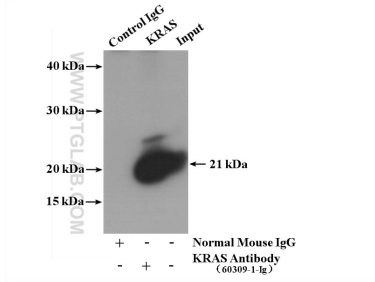
Selected Validation Data



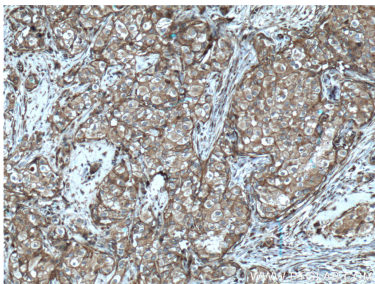
Various lysates were subjected to SDS PAGE followed by western blot with 60309-1-Ig (pan Ras Antibody) at dilution of 1:50000 incubated at room temperature for 1.5 hours. This data was developed using the same antibody clone with 60309-1-PBS in a different storage buffer formulation.



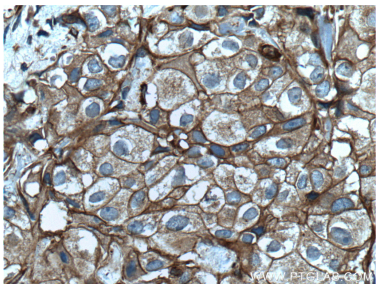
Various lysates were subjected to SDS PAGE followed by western blot with 60309-1-Ig (pan Ras antibody) at dilution of 1:50000 incubated at room temperature for 1.5 hours. This data was developed using the same antibody clone with 60309-1-PBS in a different storage buffer formulation.



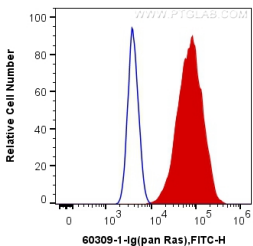
IP result of anti-pan Ras (IP:60309-1-Ig, 5ug; Detection:60309-1-Ig 1:2000) with mouse brain tissue lysate 4000 ug. This data was developed using the same antibody clone with 60309-1-PBS in a different storage buffer formulation.



Immunohistochemical analysis of paraffin-embedded human breast cancer tissue slide using 60309-1-Ig (pan Ras Antibody) at dilution of 1:200 (under 10x lens). Heat mediated antigen retrieval with Tris-EDTA buffer (pH 9.0). This data was developed using the same antibody clone with 60309-1-PBS in a different storage buffer formulation.

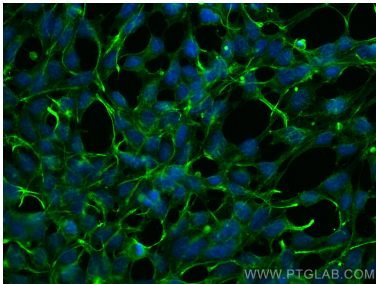


Immunohistochemical analysis of paraffin-embedded human breast cancer tissue slide using 60309-1-Ig (pan Ras Antibody) at dilution of 1:200 (under 40x lens). Heat mediated antigen retrieval with Tris-EDTA buffer (pH 9.0). This data was developed using the same antibody clone with 60309-1-PBS in a different storage buffer formulation.

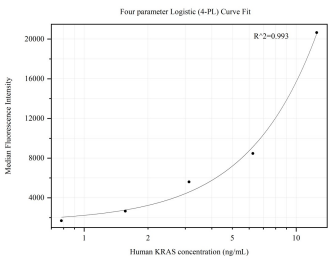


1X10⁶ HeLa cells were intracellularly stained with 0.4 ug Anti-Human pan Ras (60309-1-Ig, Clone:4H4G7) and CoraLite®488-Conjugated AffiniPure Goat Anti-Mouse IgG(H+L) at dilution 1:1000 (red), or 0.4 ug Control Antibody. Cells were fixed with 4% PFA and permeabilized with Flow Cytometry Perm Buffer (PF00011-C). This data was developed using the same antibody clone with 60309-1-PBS in a different storage buffer formulation.

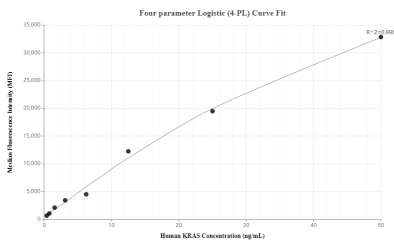
Immunohistochemical analysis of paraffin-embedded human ovary cancer tissue slide using 60309-1-Ig (pan Ras antibody) at dilution of 1:10000 (under 10x lens). Heat mediated antigen retrieval with Tris-EDTA buffer (pH 9.0). This data was developed using the same antibody clone with 60309-1-PBS in a different storage buffer formulation.



Immunofluorescent analysis of (-20°C Ethanol) fixed HEK-293 cells using pan Ras antibody (60309-1-Ig, Clone: 4H4G7) at dilution of 1:800 and CoraLite®488-Conjugated Goat Anti-Mouse IgG(H+L) (SA00013-1). This data was developed using the same antibody clone with 60309-1-PBS in a different storage buffer formulation.



Cytometric bead array standard curve of MP50398-1. KRAS Monoclonal Matched Antibody Pair, PBS Only. Capture antibody: 60309-2-PBS. Detection antibody: 60309-1-PBS. Standard:Ag2700. Range: 0.781-12.5 ng/mL



Cytometric bead array standard curve of MP80009-1, KRAS Hybrid Matched Antibody Pair, PBS Only.
Capture antibody: 60309-1-PBS. Detection antibody: 81615-1-PBS. Standard: Ag2700. Range: 0.391-50 ng/mL