

SGTA Monoclonal antibody

Catalog Number: 60305-1-Ig

Basic Information

Catalog Number: 60305-1-Ig	GenBank Accession Number: BC008885	Purification Method: Protein A purification
Size: 2400 µg/ml	GeneID (NCBI): 6449	CloneNo.: 3B10B11
Source: Mouse	UNIPROT ID: O43765	Recommended Dilutions: WB 1:5000-1:50000 IHC 1:20-1:200 IF/ICC 1:20-1:200
Isotype: IgG2b	Full Name: small glutamine-rich tetratricopeptide repeat (TPR)- containing, alpha	
Immunogen Catalog Number: AG1475	Calculated MW: 34 kDa	
	Observed MW: 34-37 kDa	

Applications

Tested Applications: IF/ICC, IHC, WB, ELISA	Positive Controls:
Species Specificity: human, mouse, rat	WB : LNCaP cells, fetal human brain tissue, NIH/3T3 cells, Neuro-2a cells, HeLa cells, HEK-293 cells, Jurkat cells, K-562 cells, HSC-T6 cells, PC-12 cells
Note-IHC: suggested antigen retrieval with TE buffer pH 9.0; (*) Alternatively, antigen retrieval may be performed with citrate buffer pH 6.0	IHC : human liver cancer tissue, IF/ICC : HeLa cells,

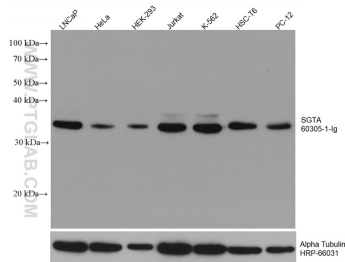
Background Information

Small glutamine-rich tetratricopeptide repeat-containing protein alpha (SGTA) is a steroid receptor molecular co-chaperone critical in a range of biological processes, including viral infection, cell division, mitosis, and cell cycle checkpoint activation. Overexpression of SGTA has been found in various cancers, including prostate/ovary/testis/liver/lung cancer.

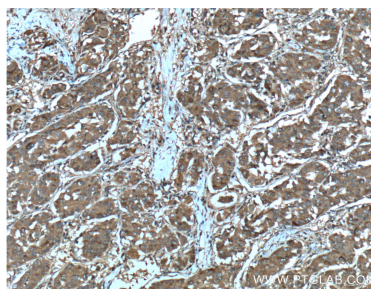
Storage

Storage:
Store at -20°C. Stable for one year after shipment.
Storage Buffer:
PBS with 0.02% sodium azide and 50% glycerol pH 7.3.
Aliquoting is unnecessary for -20°C storage

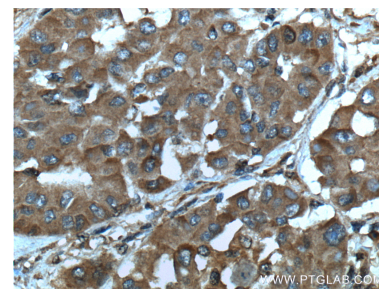
Selected Validation Data



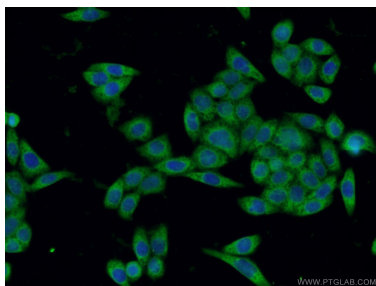
Various lysates were subjected to SDS PAGE followed by western blot with 60305-1-Ig (SGTA antibody) at dilution of 1:40000 incubated at room temperature for 1.5 hours. The membrane was stripped and reblotted with HRP-conjugated Alpha Tubulin Monoclonal antibody (HRP-66031) as loading control.



Immunohistochemical analysis of paraffin-embedded human liver cancer tissue slide using 60305-1-Ig (SGTA Antibody) at dilution of 1:200 (under 10x lens).



Immunohistochemical analysis of paraffin-embedded human liver cancer tissue slide using 60305-1-Ig (SGTA Antibody) at dilution of 1:200 (under 40x lens).



Immunofluorescent analysis of HeLa cells using 60305-1-Ig (SGTA antibody) at dilution of 1:50 and Alexa Fluor 488-conjugated AffiniPure Goat Anti-Mouse IgG (H+L).