

For Research Use Only

# PTEN Monoclonal antibody, PBS Only (Detector)

Catalog Number: 60300-3-PBS



## Basic Information

Catalog Number: 60300-3-PBS	GenBank Accession Number: BC005821	Purification Method: Protein A purification
Concentration: 1 mg/ml	GeneID (NCBI): 5728	CloneNo.: 4D8G9
Source: Mouse	UNIPROT ID: P60484	
Isotype: IgG2b	Full Name: phosphatase and tensin homolog	
Immunogen Catalog Number: AG17274	Calculated MW: 47 kDa	
	Observed MW: 55 kDa	

## Applications

**Tested Applications:**  
WB, Cytometric bead array, Indirect ELISA

**Species Specificity:**  
human, mouse

## Background Information

PTEN (also designated MMAC1), products of tumor suppressor genes, are found deleted in most human gliomas. The PTEN genes are also mutated in many other tumors, such as brain, breast, kidney and prostate cancers. PTEN is a protein tyrosine phosphatase that may terminate the signaling transduction pathways mediated by PI 3-kinase/Akt. PTEN has an apparent molecular weight of 55 kDa.

## Storage

**Storage:**  
Store at -80°C.  
**The product is shipped with ice packs. Upon receipt, store it immediately at -80°C**

**Storage Buffer:**  
PBS only, pH7.3

For technical support and original validation data for this product please contact:

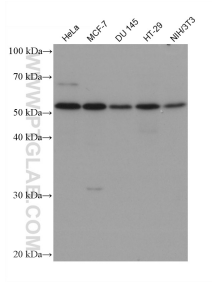
T: 4006900926

E: [Proteintech-CN@ptglab.com](mailto:Proteintech-CN@ptglab.com)

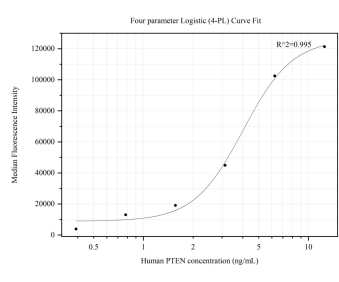
W: [ptgcn.com](http://ptgcn.com)

**This product is exclusively available under Proteintech Group brand and is not available to purchase from any other manufacturer.**

# Selected Validation Data



Various lysates were subjected to SDS PAGE followed by western blot with 60300-3-Ig (PTEN antibody) at dilution of 1:5000 incubated at room temperature for 1.5 hours. This data was developed using the same antibody clone with 60300-3-PBS in a different storage buffer formulation.



Cytometric bead array standard curve of MP50170-1, PTEN Monoclonal Matched Antibody Pair, PBS Only. Capture antibody: 60300-2-PBS. Detection antibody: 60300-3-PBS. Standard:Ag17274. Range: 0.391-12.5 ng/mL.