

For Research Use Only

CYP2D6 Monoclonal antibody, PBS Only



Catalog Number: 60297-1-PBS

Basic Information

Catalog Number: 60297-1-PBS	GenBank Accession Number: BC075023	Purification Method: Protein A purification
Size: 1 mg/ml	GeneID (NCBI): 1565	CloneNo.: 8B11D12
Source: Mouse	UNIPROT ID: P10635	
Isotype: IgG2b	Full Name: cytochrome P450, family 2, subfamily D, polypeptide 6	
Immunogen Catalog Number: AG12605	Calculated MW: 497 aa, 56 kDa	
	Observed MW: 56 kDa	

Applications

Tested Applications:
WB, Indirect ELISA, IHC

Species Specificity:
human

Background Information

CYP2D6 (Cytochrome P450 2D6) is also named as CYP2DL1 and belongs to the cytochrome P450 family. It is a monooxygenase that involved in the metabolism of drugs such as antiarrhythmics, adrenoceptor antagonists, and tricyclic antidepressants. CYP2D6 is responsible for the metabolism of many drugs and environmental chemicals that it oxidizes. It has 2 isoforms produced by alternative splicing with the molecular weight of 56 kDa and 50 kDa.

Storage

Storage:
Store at -80°C.

The product is shipped with ice packs. Upon receipt, store it immediately at -80°C

Storage Buffer:
PBS Only

For technical support and original validation data for this product please contact:

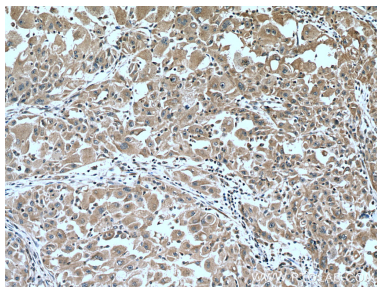
T: 4006900926

E: Proteintech-CN@ptglab.com

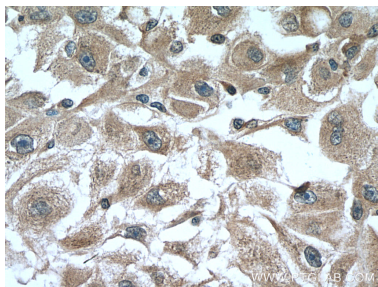
W: ptgcn.com

This product is exclusively available under Proteintech Group brand and is not available to purchase from any other manufacturer.

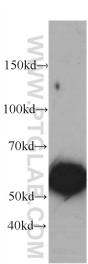
Selected Validation Data



Immunohistochemical analysis of paraffin-embedded human liver cancer tissue slide using 60297-1-Ig (CYP2D6 antibody) at dilution of 1:200 (under 10x lens). Heat mediated antigen retrieval with Tris-EDTA buffer (pH 9.0). This data was developed using the same antibody clone with 60297-1-PBS in a different storage buffer formulation.



Immunohistochemical analysis of paraffin-embedded human liver cancer tissue slide using 60297-1-Ig (CYP2D6 antibody) at dilution of 1:200 (under 40x lens). Heat mediated antigen retrieval with Tris-EDTA buffer (pH 9.0). This data was developed using the same antibody clone with 60297-1-PBS in a different storage buffer formulation.



HepG2 cells were subjected to SDS PAGE followed by western blot with 60297-1-Ig (CYP2D6 Antibody) at dilution of 1:1000 incubated at room temperature for 1.5 hours. This data was developed using the same antibody clone with 60297-1-PBS in a different storage buffer formulation.