

CYP2D6 Monoclonal antibody

Catalog Number: 60297-1-Ig

Basic Information

Catalog Number:

60297-1-Ig

Size:

2500 µg/ml

Source:

Mouse

Isotype:

IgG2b

Immunogen Catalog Number:

AG12605

GenBank Accession Number:

BC075023

GeneID (NCBI):

1565

UNIPROT ID:

P10635

Full Name:

cytochrome P450, family 2, subfamily D, polypeptide 6

Calculated MW:

497 aa, 56 kDa

Observed MW:

56 kDa

Purification Method:

Protein A purification

CloneNo.:

8B11D12

Recommended Dilutions:

WB 1:500-1:2000

IHC 1:50-1:500

Applications

Tested Applications:

IHC, WB, ELISA

Species Specificity:

human

Note-IHC: suggested antigen retrieval with TE buffer pH 9.0; (*) Alternatively, antigen retrieval may be performed with citrate buffer pH 6.0

Positive Controls:

WB : HepG2 cells, fetal human brain tissue

IHC : human liver cancer tissue,

Background Information

CYP2D6(Cytochrome P450 2D6) is also named as CYP2DL1 and belongs to the cytochrome P450 family. It is a monooxygenase that involved in the metabolism of drugs such as antiarrhythmics, adrenoceptor antagonists, and tricyclic antidepressants. CYP2D6 is responsible for the metabolism of many drugs and environmental chemicals that it oxidizes. It has 2 isoforms produced by alternative splicing with the molecular weight of 56 kDa and 50 kDa.

Storage

Storage:

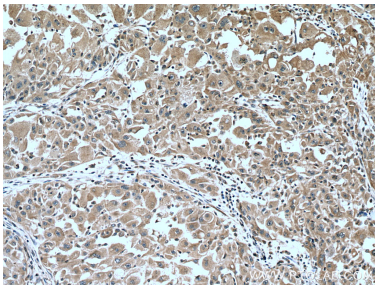
Store at -20°C. Stable for one year after shipment.

Storage Buffer:

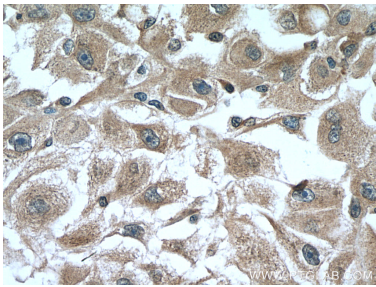
PBS with 0.02% sodium azide and 50% glycerol pH 7.3.

Aliquoting is unnecessary for -20°C storage

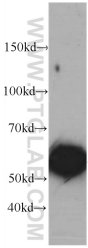
Selected Validation Data



Immunohistochemical analysis of paraffin-embedded human liver cancer tissue slide using 60297-1-Ig (CYP2D6 antibody) at dilution of 1:200 (under 10x lens). Heat mediated antigen retrieval with Tris-EDTA buffer (pH 9.0).



Immunohistochemical analysis of paraffin-embedded human liver cancer tissue slide using 60297-1-Ig (CYP2D6 antibody) at dilution of 1:200 (under 40x lens). Heat mediated antigen retrieval with Tris-EDTA buffer (pH 9.0).



HepG2 cells were subjected to SDS PAGE followed by western blot with 60297-1-Ig (CYP2D6 Antibody) at dilution of 1:1000 incubated at room temperature for 1.5 hours.