

For Research Use Only

# SCGF Monoclonal antibody

Catalog Number: 60295-1-Ig **3 Publications**



## Basic Information

<b>Catalog Number:</b> 60295-1-Ig	<b>GenBank Accession Number:</b> BC005810	<b>Purification Method:</b> Protein A purification
<b>Size:</b> 3900 ug/ml	<b>GeneID (NCBI):</b> 6320	<b>CloneNo.:</b> 4H11E4
<b>Source:</b> Mouse	<b>UNIPROT ID:</b> Q9Y240	<b>Recommended Dilutions:</b> WB 1:5000-1:50000 IHC 1:20-1:200 IF-P 1:200-1:800 IF/ICC 1:400-1:1600
<b>Isotype:</b> IgG2b	<b>Full Name:</b> C-type lectin domain family 11, member A	
<b>Immunogen Catalog Number:</b> AG21365	<b>Calculated MW:</b> 36 kDa	
	<b>Observed MW:</b> 36-40 kDa	

## Applications

<b>Tested Applications:</b> WB, IHC, IF/ICC, IF-P, ELISA	<b>Positive Controls:</b> WB : THP-1 cells, human heart tissue, Kasumi-1 cells IHC : human lymphoma tissue, IF-P : human lymphoma tissue, HepG2 cells IF/ICC : HepG2 cells,
<b>Cited Applications:</b> WB, IHC, IF	
<b>Species Specificity:</b> human	
<b>Cited Species:</b> human, mouse	
<b>Note-IHC: suggested antigen retrieval with TE buffer pH 9.0; (*) Alternatively, antigen retrieval may be performed with citrate buffer pH 6.0</b>	

## Background Information

CLEC11A, also named as CLECSF3, LSLCL, SCGF and p47, stimulates the proliferation and differentiation of hematopoietic precursor cells from various lineages, including erythrocytes, lymphocytes, granulocytes and macrophages. CLEC11A acts synergistically with other cytokines, including IL-3, GCSF, GM-CSF and FLT3 ligand. It suppresses SCF-stimulated erythrocyte proliferation.

## Notable Publications

Author	Pubmed ID	Journal	Application
Shikun Zhang	33715180	FASEB J	IHC, IF
Fangfang Li	35655001	Stem Cell Rev Rep	WB
Weidan Fang	37597212	Biomol Biomed	WB

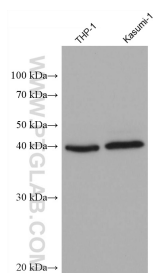
## Storage

**Storage:**  
Store at -20°C. Stable for one year after shipment.  
**Storage Buffer:**  
PBS with 0.02% sodium azide and 50% glycerol pH 7.3.  
Aliquoting is unnecessary for -20°C storage

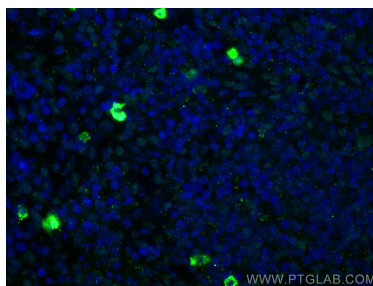
For technical support and original validation data for this product please contact:  
T: 4006900926 E: Proteintech-CN@ptglab.com W: ptgcn.com

This product is exclusively available under Proteintech Group brand and is not available to purchase from any other manufacturer.

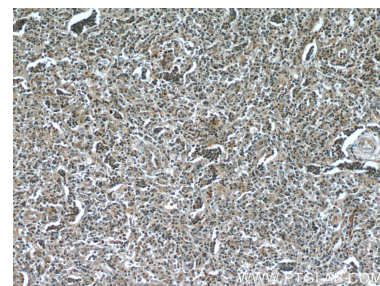
## Selected Validation Data



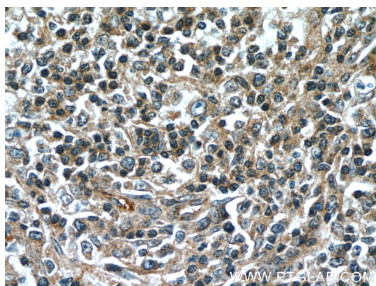
Various lysates were subjected to SDS PAGE followed by western blot with 60295-1-Ig (SCGF antibody) at dilution of 1:10000 incubated at room temperature for 1.5 hours.



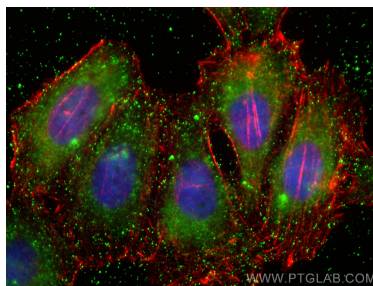
Immunofluorescent analysis of (4% PFA) fixed human lymphoma tissue using SCGF antibody (60295-1-Ig, Clone: 4H11E4 ) at dilution of 1:400 and CoraLite®488-Conjugated AffiniPure Goat Anti-Mouse IgG(H+L).



Immunohistochemical analysis of paraffin-embedded human lymphoma tissue using 60295-1-Ig (CLEC11A antibody) at dilution of 1:50 (under 10x lens).



Immunohistochemical analysis of paraffin-embedded human lymphoma tissue slide using 60295-1-Ig (CLEC11A antibody) at dilution of 1:50 (under 40x lens).



Immunofluorescent analysis of (-20°C Ethanol) fixed HepG2 cells using SCGF antibody (60295-1-Ig, Clone: 4H11E4 ) at dilution of 1:800 and CoraLite®488-Conjugated AffiniPure Goat Anti-Mouse IgG(H+L), CL594-phalloidin (red).