

For Research Use Only

# OPTN/Optineurin Monoclonal antibody, PBS Only

Catalog Number: 60293-1-PBS

Featured Product



## Basic Information

Catalog Number:

60293-1-PBS

Size:

1 mg/ml

Source:

Mouse

Isotype:

IgG1

Immunogen Catalog Number:

AG1272

GenBank Accession Number:

BC013876

GeneID (NCBI):

10133

UNIPROT ID:

Q96CV9

Full Name:

optineurin

Calculated MW:

66 kDa

Observed MW:

70-74 kDa

Purification Method:

Protein A purification

CloneNo.:

6C1H4

## Applications

Tested Applications:

WB, IHC, IF/ICC, Indirect ELISA

Species Specificity:

human

## Background Information

OPTN, also named as FIP2, GLC1E, HIP7, HYPL and NRP, plays a neuroprotective role in the eye and optic nerve. It is probably part of the TNF- $\alpha$  signaling pathway that can shift the equilibrium toward induction of cell death. OPTN may act by regulating membrane trafficking and cellular morphogenesis via a complex that contains Rab8 and huntingtin (HD). OPTN may constitute a cellular target for adenovirus E3 14.7, an inhibitor of TNF- $\alpha$  functions, thereby affecting cell death. Defects in OPTN are a cause of susceptibility to normal pressure glaucoma (NPG). OPTN mutated in adult-onset primary open angle glaucoma. It supports the protective role of OPTN in the trabecular meshwork.

## Storage

Storage:

Store at -80°C.

The product is shipped with ice packs. Upon receipt, store it immediately at -80°C

Storage Buffer:

PBS Only

For technical support and original validation data for this product please contact:

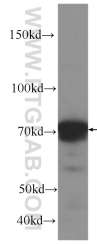
T: 4006900926

E: [Proteintech-CN@ptglab.com](mailto:Proteintech-CN@ptglab.com)

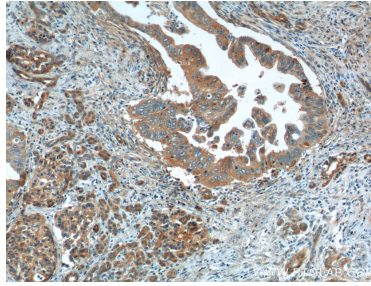
W: [ptgcn.com](http://ptgcn.com)

This product is exclusively available under Proteintech Group brand and is not available to purchase from any other manufacturer.

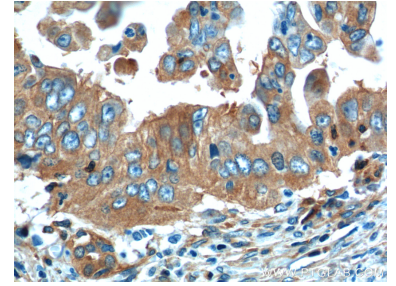
## Selected Validation Data



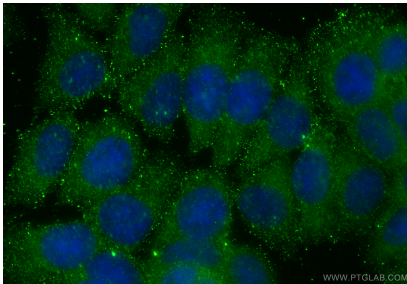
human heart tissue were subjected to SDS PAGE followed by western blot with 60293-1-Ig (OPTN Antibody) at dilution of 1:1000 incubated at room temperature for 1.5 hours. This data was developed using the same antibody clone with 60293-1-PBS in a different storage buffer formulation.



Immunohistochemical analysis of paraffin-embedded human pancreas cancer tissue slide using 60293-1-Ig (OPTN Antibody) at dilution of 1:200 (under 10x lens). This data was developed using the same antibody clone with 60293-1-PBS in a different storage buffer formulation.



Immunohistochemical analysis of paraffin-embedded human pancreas cancer tissue slide using 60293-1-Ig (OPTN Antibody) at dilution of 1:200 (under 40x lens). This data was developed using the same antibody clone with 60293-1-PBS in a different storage buffer formulation.



Immunofluorescent analysis of (-20°C Methanol) fixed MCF-7 cells using OPTN antibody (60293-1-Ig, Clone: 6C1H4) at dilution of 1:800 and CoraLite®488-Conjugated Goat Anti-Mouse IgG(H+L) (SA00013-1). This data was developed using the same antibody clone with 60293-1-PBS in a different storage buffer formulation.