

For Research Use Only

# CD45 Monoclonal antibody, PBS Only (Capture)

Catalog Number: 60287-4-PBS



## Basic Information

Catalog Number:

60287-4-PBS

Size:

1 mg/ml

Source:

Mouse

Isotype:

IgG1

Immunogen Catalog Number:

AG13712

GenBank Accession Number:

BC014239

GeneID (NCBI):

5788

ENSEMBL Gene ID:

ENSG00000081237

UNIPROT ID:

P08575

Full Name:

protein tyrosine phosphatase, receptor type, C

Calculated MW:

1304 aa, 147 kDa

Purification Method:

Protein G Magarose purification

CloneNo.:

2H11F11

## Applications

Tested Applications:

Cytometric bead array, Indirect ELISA

Species Specificity:

human

## Background Information

### Storage

Storage:

Store at -80°C.

The product is shipped with ice packs. Upon receipt, store it immediately at -80°C

Storage Buffer:

PBS Only

For technical support and original validation data for this product please contact:

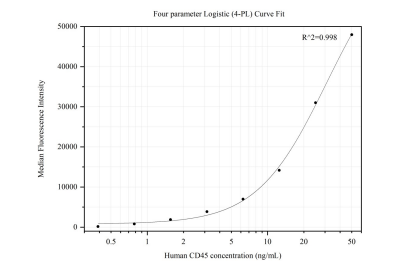
T: 4006900926

E: [Proteintech-CN@ptglab.com](mailto:Proteintech-CN@ptglab.com)

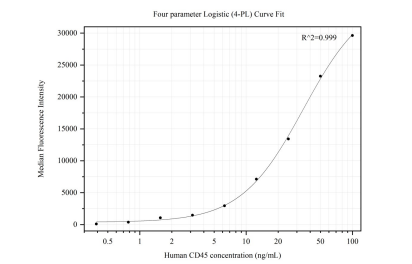
W: [ptgcn.com](http://ptgcn.com)

This product is exclusively available under Proteintech Group brand and is not available to purchase from any other manufacturer.

# Selected Validation Data



Cytometric bead array standard curve of MP50221-2, CD45 Monoclonal Matched Antibody Pair, PBS Only. Capture antibody: 60287-4-PBS. Detection antibody: 60287-5-PBS. Standard:Ag13712. Range: 0.391-50 ng/mL



Cytometric bead array standard curve of MP50221-3, CD45 Monoclonal Matched Antibody Pair, PBS Only. Capture antibody: 60287-4-PBS. Detection antibody: 60287-6-PBS. Standard:Ag13712. Range: 0.391-100 ng/mL