

# FAM3C Monoclonal antibody

Catalog Number: 60282-1-Ig

## Basic Information

<b>Catalog Number:</b> 60282-1-Ig	<b>GenBank Accession Number:</b> BC046932	<b>Purification Method:</b> Protein A purification
<b>Size:</b> 1000 ug/ml	<b>GeneID (NCBI):</b> 10447	<b>CloneNo.:</b> 2E10D5
<b>Source:</b> Mouse	<b>UNIPROT ID:</b> Q92520	<b>Recommended Dilutions:</b> WB 1:500-1:2000 IHC 1:50-1:500 IF/ICC 1:200-1:800
<b>Isotype:</b> IgG1	<b>Full Name:</b> family with sequence similarity 3, member C	
<b>Immunogen Catalog Number:</b> AG5516	<b>Calculated MW:</b> 25 kDa	
	<b>Observed MW:</b> 25 kDa	

## Applications

<b>Tested Applications:</b> WB, IHC, IF/ICC, ELISA	<b>Positive Controls:</b>
<b>Species Specificity:</b> human	<b>WB :</b> fetal human brain tissue,
<b>Note-IHC: suggested antigen retrieval with TE buffer pH 9.0; (*) Alternatively, antigen retrieval may be performed with citrate buffer pH 6.0</b>	<b>IHC :</b> human oesophagus cancer tissue,
	<b>IF/ICC :</b> HepG2 cells,

## Background Information

FAM3C, also known as ILEI, is a secreted protein belonging to the cytokine-like protein family. FAM3C is a signaling cytokine with a GG domain, hydrophobic leader sequence and an N-terminal signal peptide. A change in expression of this protein has been noted in pancreatic cancer-derived cells. FAM3C has been involved in the epithelial to mesenchymal transition, and retinal laminar formation processes in vertebrates. Also, FAM3C may play an important role in inner ear development and thus be involved in cell differentiation and proliferation during inner ear embryogenesis.

## Storage

**Storage:**  
Store at -20°C. Stable for one year after shipment.  
**Storage Buffer:**  
PBS with 0.02% sodium azide and 50% glycerol pH 7.3.  
**Aliquoting is unnecessary for -20°C storage**

For technical support and original validation data for this product please contact:

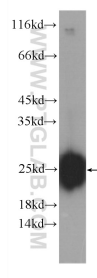
T: 4006900926

E: [Proteintech-CN@ptglab.com](mailto:Proteintech-CN@ptglab.com)

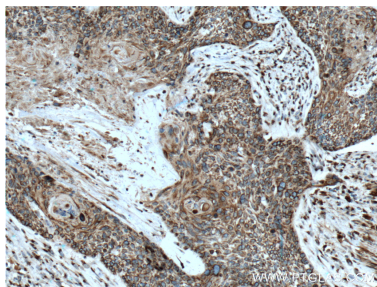
W: [ptgcn.com](http://ptgcn.com)

This product is exclusively available under Proteintech Group brand and is not available to purchase from any other manufacturer.

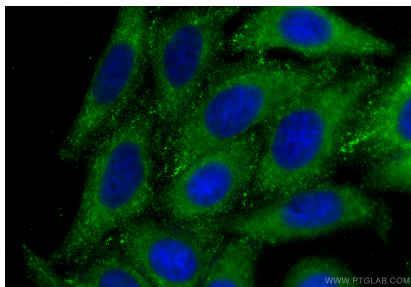
## Selected Validation Data



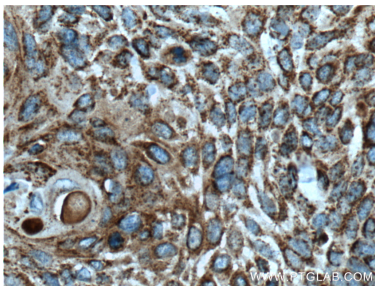
fetal human brain tissue were subjected to SDS PAGE followed by western blot with 60282-1-Ig (FAM3C Antibody) at dilution of 1:1000 incubated at room temperature for 1.5 hours.



Immunohistochemical analysis of paraffin-embedded human oesophagus cancer tissue slide using 60282-1-Ig (FAM3C Antibody) at dilution of 1:200 (under 10x lens). Heat mediated antigen retrieval with Tris-EDTA buffer (pH 9.0).



Immunofluorescent analysis of (-20°C Ethanol) fixed HepG2 cells using FAM3C antibody (60282-1-Ig, Clone: 2E10D5 ) at dilution of 1:400 and CoraLite®488-Conjugated Goat Anti-Mouse IgG(H+L) (SA00013-1).



Immunohistochemical analysis of paraffin-embedded human oesophagus cancer tissue slide using 60282-1-Ig (FAM3C Antibody) at dilution of 1:200 (under 40x lens). Heat mediated antigen retrieval with Tris-EDTA buffer (pH 9.0).