

SECTM1 Monoclonal antibody

Catalog Number: 60281-1-Ig 1 Publications

Basic Information

Catalog Number:

60281-1-Ig

Size:

1000 µg/ml

Source:

Mouse

Isotype:

IgM

Immunogen Catalog Number:

AG14645

GenBank Accession Number:

BC017716

GeneID (NCBI):

6398

UNIPROT ID:

Q8WVN6

Full Name:

secreted and transmembrane 1

Calculated MW:

248 aa, 27 kDa

Observed MW:

27 kDa

Purification Method:

Thiophilic affinity chromatograph

CloneNo.:

1C11B4

Recommended Dilutions:

WB 1:1000-1:4000

IHC 1:50-1:500

Applications

Tested Applications:

WB, IHC, ELISA

Cited Applications:

WB, IHC

Species Specificity:

human

Cited Species:

human

Note-IHC: suggested antigen retrieval with TE buffer pH 9.0; (*) Alternatively, antigen retrieval may be performed with citrate buffer pH 6.0

Positive Controls:

WB : HaCaT cells, JAR cells, NCCIT cells, PC-3 cells, LNCaP cells, HeLa cells, K-562 cells

IHC : human breast cancer tissue, human colon cancer tissue

Background Information

SECTM1, also named as protein K12, is originally identified by its location just upstream of the CD7 locus. It has been proposed as a ligand for CD7. SECTM1 is involved in thymocyte signaling. This antibody is specific to SECTM1.

Notable Publications

| Author | Pubmed ID | Journal | Application |
|---------|-----------|----------|-------------|
| Jie Mei | 36818292 | iScience | WB, IHC |

Storage

Storage:

Store at -20°C. Stable for one year after shipment.

Storage Buffer:

PBS with 0.02% sodium azide and 50% glycerol pH 7.3.

Aliquoting is unnecessary for -20°C storage

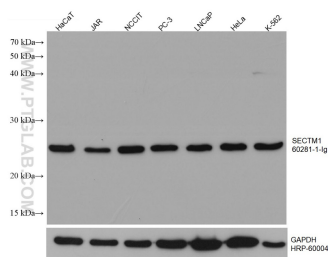
For technical support and original validation data for this product please contact:

T: 4006900926

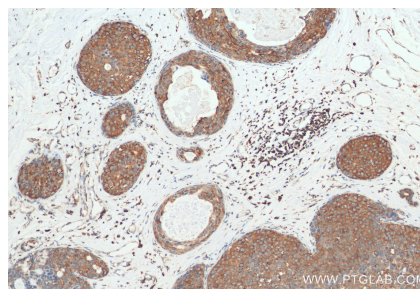
E: Proteintech-CN@ptglab.comW: ptgcn.com

This product is exclusively available under Proteintech Group brand and is not available to purchase from any other manufacturer.

Selected Validation Data



Various lysates were subjected to SDS PAGE followed by western blot with 60281-1-Ig (SECTM1 antibody) at dilution of 1:2000 incubated at room temperature for 1.5 hours. The membrane was stripped and reblotted with HRP-conjugated GAPDH Monoclonal antibody (HRP-60004) as loading control.



Immunohistochemical analysis of paraffin-embedded human breast cancer tissue slide using 60281-1-Ig (SECTM1 antibody) at dilution of 1:200 (under 10x lens). Heat mediated antigen retrieval with Tris-EDTA buffer (pH 9.0).