

For Research Use Only

CRYBB1 Monoclonal antibody

Catalog Number: 60273-1-Ig



Basic Information

Catalog Number: 60273-1-Ig	GenBank Accession Number: BC036790	Purification Method: Protein A purification
Size: 600 µg/ml	GeneID (NCBI): 1414	CloneNo.: 6F12B12
Source: Mouse	UNIPROT ID: P53674	Recommended Dilutions: WB 1:500-1:2000 IF 1:300-1:1200
Isotype: IgG1	Full Name: crystallin, beta B1	
Immunogen Catalog Number: AG4722	Calculated MW: 252 aa, 28 kDa	
	Observed MW: 30 kDa	

Applications

Tested Applications: WB, IF/ICC, ELISA	Positive Controls: WB : C6 cells, mouse eye tissue IF : hTERT-RPE1 cells,
Species Specificity: human, mouse, rat	

Background Information

Mutation in CRYBB1 is associated with congenital Cataract-Microcornea Syndrome.

Storage

Storage:
Store at -20°C. Stable for one year after shipment.
Storage Buffer:
PBS with 0.02% sodium azide and 50% glycerol pH 7.3.
Aliquoting is unnecessary for -20°C storage

For technical support and original validation data for this product please contact:

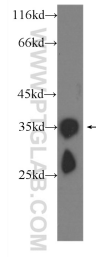
T: 4006900926

E: Proteintech-CN@ptglab.com

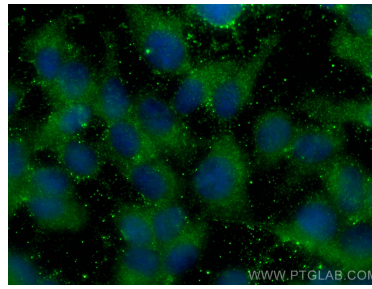
W: ptgcn.com

This product is exclusively available under Proteintech Group brand and is not available to purchase from any other manufacturer.

Selected Validation Data



C6 cells were subjected to SDS PAGE followed by western blot with 60273-1-Ig (CRYBB1 Antibody) at dilution of 1:1000 incubated at room temperature for 1.5 hours.



Immunofluorescent analysis of (-20°C Methanol) fixed hTERT-RPE1 cells using CRYBB1 antibody (60273-1-Ig, Clone: 6F12B12) at dilution of 1:600 and CoraLite®488-Conjugated AffiniPure Goat Anti-Mouse IgG(H+L).