

# Thyroglobulin Monoclonal antibody, PBS Only

Catalog Number: 60272-1-PBS

## Basic Information

Catalog Number:	GenBank Accession Number:	Purification Method:
60272-1-PBS	BC140933	Protein A purification
Size:	GeneID (NCBI):	CloneNo.:
1mg/ml	7038	4D3C5
Source:	UNIPROT ID:	
Mouse	P01266	
Isotype:	Full Name:	
IgG2a	thyroglobulin	
Immunogen Catalog Number:	Calculated MW:	
AG18070	2768 aa, 305 kDa	

## Applications

Tested Applications:  
IHC, IF-P, Indirect ELISA

Species Specificity:  
human

## Background Information

Thyroglobulin (Tg) is a glycoprotein homodimer produced predominantly by the thyroid gland. It acts as a substrate for the synthesis of thyroxine and triiodothyronine as well as the storage of the inactive forms of thyroid hormone and iodine. Thyroglobulin is secreted from the endoplasmic reticulum to its site of iodination, and subsequent thyroxine biosynthesis, in the follicular lumen. Mutations in this gene cause thyroid dysmorphogenesis, manifested as goiter, and are associated with moderate to severe congenital hypothyroidism. Polymorphisms in this gene are associated with susceptibility to autoimmune thyroid diseases (AITD) such as Graves disease and Hashimoto thyroiditis.

## Storage

Storage:  
Store at -80°C.

The product is shipped with ice packs. Upon receipt, store it immediately at -80°C

Storage Buffer:  
PBS Only

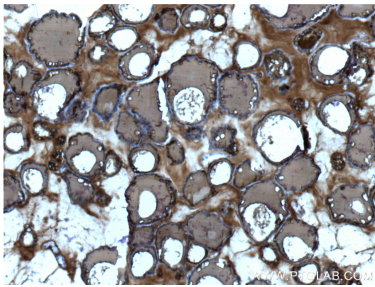
For technical support and original validation data for this product please contact:

T: 4006900926

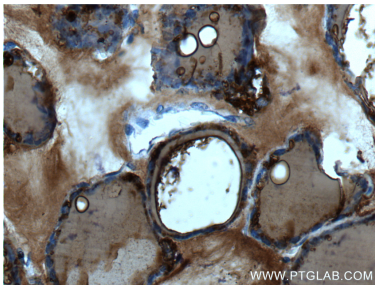
E: [Proteintech-CN@ptglab.com](mailto:Proteintech-CN@ptglab.com)W: [ptgcn.com](http://ptgcn.com)

This product is exclusively available under Proteintech Group brand and is not available to purchase from any other manufacturer.

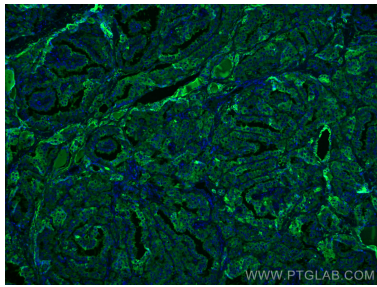
Selected Validation Data



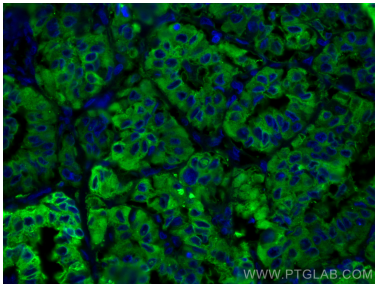
Immunohistochemical analysis of paraffin-embedded human thyroid tissue slide using 60272-1-Ig (Thyroglobulin antibody at dilution of 1:200 (under 10x lens). This data was developed using the same antibody clone with 60272-1-PBS in a different storage buffer formulation.



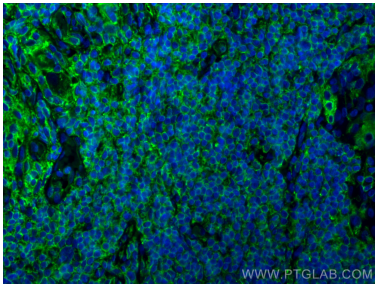
Immunohistochemical analysis of paraffin-embedded human thyroid tissue slide using 60272-1-Ig (Thyroglobulin antibody at dilution of 1:200 (under 40x lens). This data was developed using the same antibody clone with 60272-1-PBS in a different storage buffer formulation.



Immunofluorescent analysis of (4% PFA) fixed human thyroid cancer tissue using Thyroglobulin antibody (60272-1-Ig, Clone: 4D3C5 ) at dilution of 1:400 and CoraLite®488-Conjugated AffiniPure Goat Anti-Mouse IgG(H+L). This data was developed using the same antibody clone with 60272-1-PBS in a different storage buffer formulation.



Immunofluorescent analysis of (4% PFA) fixed human thyroid cancer tissue using Thyroglobulin antibody (60272-1-Ig, Clone: 4D3C5 ) at dilution of 1:400 and CoraLite®488-Conjugated AffiniPure Goat Anti-Mouse IgG(H+L). This data was developed using the same antibody clone with 60272-1-PBS in a different storage buffer formulation.



Immunofluorescent analysis of (4% PFA) fixed paraffin-embedded human thyroid cancer tissue using Thyroglobulin antibody (60272-1-Ig, Clone: 4D3C5 ) at dilution of 1:400 and Multi-rAb CoraLite® Plus 488-Goat Anti-Mouse Recombinant Secondary Antibody (H+L) (RGAM002). Heat mediated antigen retrieval with Tris-EDTA buffer (pH 9.0). This data was developed using the same antibody clone with 60272-1-PBS in a different storage buffer formulation.

