

For Research Use Only

SND1 Monoclonal antibody, PBS Only



Catalog Number: 60265-1-PBS

Featured Product

Basic Information

Catalog Number:

60265-1-PBS

Size:

1 mg/ml

Source:

Mouse

Isotype:

IgG1

Immunogen Catalog Number:

AG1200

GenBank Accession Number:

BC017180

GeneID (NCBI):

27044

UNIPROT ID:

Q7KZF4

Full Name:

staphylococcal nuclease and tudor domain containing 1

Calculated MW:

101 kDa

Observed MW:

101 kDa

Purification Method:

Protein G purification

CloneNo.:

1A6A4

Applications

Tested Applications:

WB, IP, Indirect ELISA, IHC, IF

Species Specificity:

human, mouse, rat

Background Information

Staphylococcal nuclease domain-containing 1 (SND1), is a multifunctional nuclease that consists of four staphylococcal nuclease domains and a tudor domain. SND1 acts as a coactivator that facilitates transcriptional activity of STAT5, 6 and c-Myc. SND1 is a comprising part of the RNA-induced silencing complex (RISC), and takes part in the functions of miRNA, regulates transcription through transcriptional coactivation, RNA interference, RNA splicing, and RNA editing. Higher level of SND1 has been found in colon cancer and prostate cancer, can promote HCC angiogenesis in xenograft model through induction of angiogenic factors.

Storage

Storage:

Store at -80°C.

The product is shipped with ice packs. Upon receipt, store it immediately at -80°C

Storage Buffer:

PBS Only

For technical support and original validation data for this product please contact:

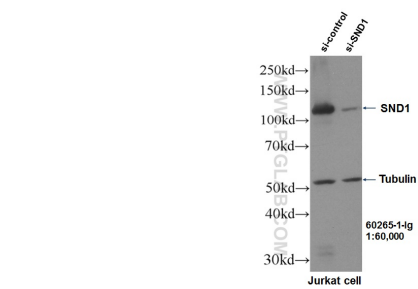
T: 4006900926

E: Proteintech-CN@ptglab.com

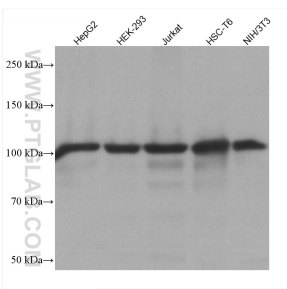
W: ptgcn.com

This product is exclusively available under Proteintech Group brand and is not available to purchase from any other manufacturer.

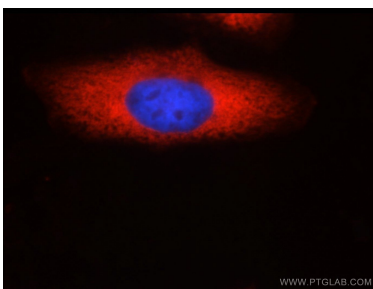
Selected Validation Data



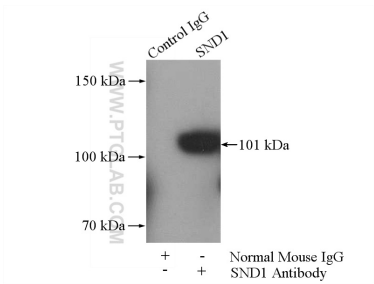
WB result of SND1 antibody (60265-1-Ig, 1:60,000) with si-Control and si-SND1 transfected Jurkat cells. This data was developed using the same antibody clone with 60265-1-PBS in a different storage buffer formulation.



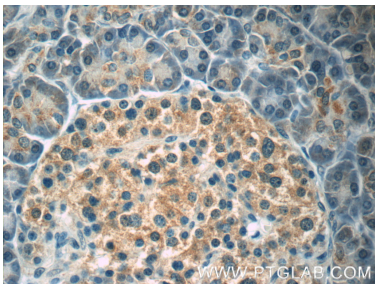
Various lysates were subjected to SDS PAGE followed by western blot with 60265-1-Ig (SND1 antibody) at dilution of 1:20000 incubated at room temperature for 1.5 hours. This data was developed using the same antibody clone with 60265-1-PBS in a different storage buffer formulation.



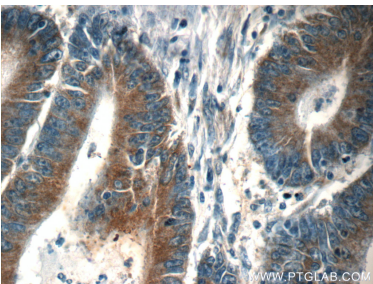
Immunofluorescent analysis of HepG2 cells using 60265-1-Ig(SND1 antibody) at dilution of 1:50 and Rhodamine-labeled goat anti-mouse IgG (red). This data was developed using the same antibody clone with 60265-1-PBS in a different storage buffer formulation.



IP result of anti-SND1 (IP:60265-1-Ig, 5ug; Detection:60265-1-Ig 1:500) with HeLa cells lysate 1400ug. This data was developed using the same antibody clone with 60265-1-PBS in a different storage buffer formulation.



Immunohistochemical analysis of paraffin-embedded human pancreas tissue slide using 60265-1-Ig (SND1 Antibody) at dilution of 1:50 (under 40x lens). This data was developed using the same antibody clone with 60265-1-PBS in a different storage buffer formulation.



Immunohistochemical analysis of paraffin-embedded human colon cancer tissue slide using 60265-1-Ig (SND1 Antibody) at dilution of 1:50 (under 40x lens). This data was developed using the same antibody clone with 60265-1-PBS in a different storage buffer formulation.