

For Research Use Only

# MEST Monoclonal antibody, PBS Only

Catalog Number: 60263-1-PBS



## Basic Information

Catalog Number:

60263-1-PBS

Concentration:

1mg/ml

Source:

Mouse

Isotype:

IgG2a

Immunogen Catalog Number:

AG11929

GenBank Accession Number:

BC011908

GeneID (NCBI):

4232

UNIPROT ID:

Q5EB52

Full Name:

mesoderm specific transcript

homolog (mouse)

Calculated MW:

38 kDa

Observed MW:

34 kDa

Purification Method:

Protein A purification

CloneNo.:

1A4A1

## Applications

Tested Applications:

WB, IHC, IF/ICC, Indirect ELISA

Species Specificity:

human

## Background Information

MEST (Mesoderm-specific transcript homolog protein) is also named as PEG1 and belongs to the AB hydrolase superfamily. The gene is a imprinting gene, which is associated with growth of mesodermal origin cells (PMID:20339302) and plays important roles in embryo development (PMID:21375506). It is also a novel regulator of Wnt/CTNNB signalling during adipogenic differentiation (PMID:21375506). It has 3 isoforms produced by alternative splicing and the full length protein has a glycosylation site.

## Storage

Storage:

Store at -80°C.

The product is shipped with ice packs. Upon receipt, store it immediately at -80°C

Storage Buffer:

PBS Only

For technical support and original validation data for this product please contact:

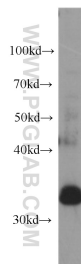
T: 4006900926

E: [Proteintech-CN@ptglab.com](mailto:Proteintech-CN@ptglab.com)

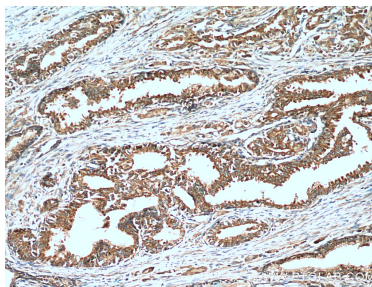
W: [ptgcn.com](http://ptgcn.com)

This product is exclusively available under Proteintech Group brand and is not available to purchase from any other manufacturer.

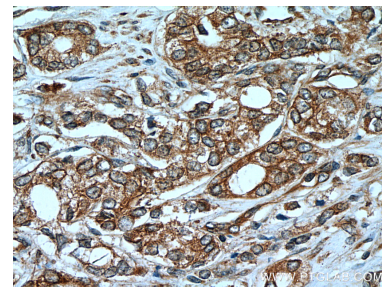
## Selected Validation Data



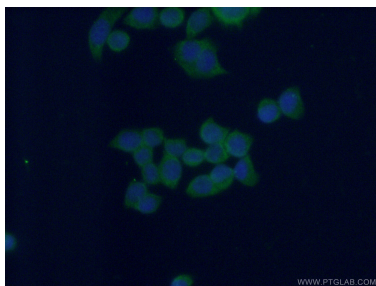
PC-3 cells were subjected to SDS PAGE followed by western blot with 60263-1-Ig (MEST antibody) at dilution of 1:1000 incubated at room temperature for 1.5 hours. This data was developed using the same antibody clone with 60263-1-PBS in a different storage buffer formulation.



Immunohistochemical analysis of paraffin-embedded human prostate cancer tissue slide using 60263-1-Ig (MEST Antibody) at dilution of 1:400 (under 10x lens). This data was developed using the same antibody clone with 60263-1-PBS in a different storage buffer formulation.



Immunohistochemical analysis of paraffin-embedded human prostate cancer tissue slide using 60263-1-Ig (MEST Antibody) at dilution of 1:400 (under 40x lens). This data was developed using the same antibody clone with 60263-1-PBS in a different storage buffer formulation.



Immunofluorescent analysis of (-20°C Ethanol) fixed BxPC-3 cells using 60263-1-Ig(MEST antibody) at dilution of 1:100 and Alexa Fluor 488-conjugated AffiniPure Goat Anti-Mouse IgG(H+L). This data was developed using the same antibody clone with 60263-1-PBS in a different storage buffer formulation.