

For Research Use Only

MEST Monoclonal antibody

Catalog Number: 60263-1-Ig



Basic Information

Catalog Number: 60263-1-Ig	GenBank Accession Number: BC011908	Purification Method: Protein A purification
Size: 3000 µg/ml	GeneID (NCBI): 4232	CloneNo.: 1A4A1
Source: Mouse	UNIPROT ID: Q5EB52	Recommended Dilutions: WB 1:500-1:2000 IHC 1:50-1:500 IF 1:50-1:500
Isotype: IgG2a	Full Name: mesoderm specific transcript homolog (mouse)	
Immunogen Catalog Number: AG11929	Calculated MW: 38 kDa	
	Observed MW: 34 kDa	

Applications

Tested Applications: IF/ICC, IHC, WB, ELISA	Positive Controls: WB : PC-3 cells, IHC : human prostate cancer tissue, IF : BxPC-3 cells,
Species Specificity: human, mouse	
Note-IHC: suggested antigen retrieval with TE buffer pH 9.0; (*) Alternatively, antigen retrieval may be performed with citrate buffer pH 6.0	

Background Information

MEST (Mesoderm-specific transcript homolog protein) is also named as PEG1 and belongs to the AB hydrolase superfamily. The gene is a imprinting gene, which is associated with growth of mesodermal origin cells (PMID:20339302) and plays important roles in embryo development (PMID:21375506). It is also a novel regulator of Wnt/CTNNB signalling during adipogenic differentiation (PMID:21375506). It has 3 isoforms produced by alternative splicing and the full length protein has a glycosylation site.

Storage

Storage:
Store at -20°C. Stable for one year after shipment.
Storage Buffer:
PBS with 0.02% sodium azide and 50% glycerol pH 7.3.
Aliquoting is unnecessary for -20°C storage

For technical support and original validation data for this product please contact:

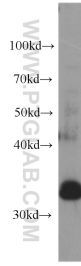
T: 4006900926

E: Proteintech-CN@ptglab.com

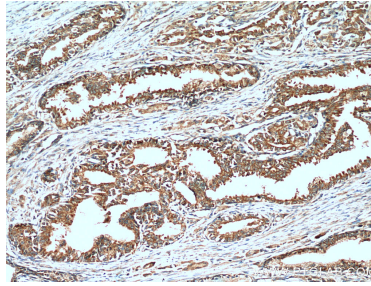
W: ptgcn.com

This product is exclusively available under Proteintech Group brand and is not available to purchase from any other manufacturer.

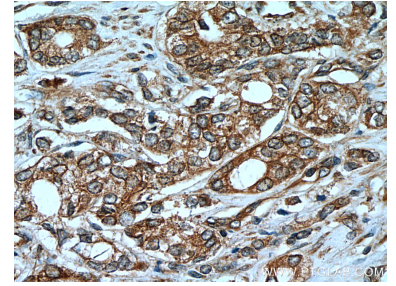
Selected Validation Data



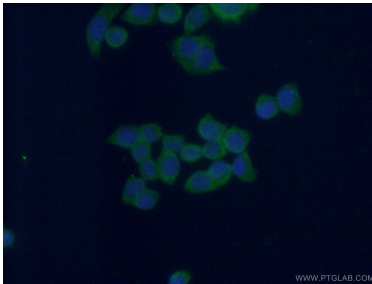
PC-3 cells were subjected to SDS PAGE followed by western blot with 60263-1-Ig (MEST antibody) at dilution of 1:1000 incubated at room temperature for 1.5 hours.



Immunohistochemical analysis of paraffin-embedded human prostate cancer tissue slide using 60263-1-Ig (MEST Antibody) at dilution of 1:400 (under 10x lens).



Immunohistochemical analysis of paraffin-embedded human prostate cancer tissue slide using 60263-1-Ig (MEST Antibody) at dilution of 1:400 (under 40x lens).



Immunofluorescent analysis of (-20°C Ethanol) fixed BxPC-3 cells using 60263-1-Ig (MEST antibody) at dilution of 1:100 and Alexa Fluor 488-conjugated AffiniPure Goat Anti-Mouse IgG(H+L).