

For Research Use Only

Napsin A Monoclonal antibody, PBS Only

Catalog Number: 60259-2-PBS



Basic Information

Catalog Number: 60259-2-PBS	GenBank Accession Number: BC017842	Purification Method: Protein A purification
Size: 1mg/ml	GeneID (NCBI): 9476	CloneNo.: 1H7F2
Source: Mouse	UNIPROT ID: O96009	
Isotype: IgG1	Full Name: napsin A aspartic peptidase	
Immunogen Catalog Number: AG9721	Calculated MW: 420 aa, 45 kDa	

Applications

Tested Applications:
IHC, IF/ICC, FC (Intra), ELISA

Species Specificity:
human

Background Information

Napsin is found in two isoforms, napsin A and B, with highly homologous nucleotide sequences (91.2%). Napsin A appears to be a functional proteinase, predominantly expressed in lung and kidney. Napsin B is transcribed exclusively in cells related to the immune system and lacks an in-frame stop codon and is believed to be a pseudogene.(PMID:12698189). Napsin A is superior to TTF-1 in distinguishing primary lung ACA from other carcinomas (except kidney), particularly primary lung small cell carcinoma, and primary thyroid carcinoma. (PMID:22288963).

Storage

Storage:
Store at -80°C.
The product is shipped with ice packs. Upon receipt, store it immediately at -80°C

Storage Buffer:
PBS Only

For technical support and original validation data for this product please contact:

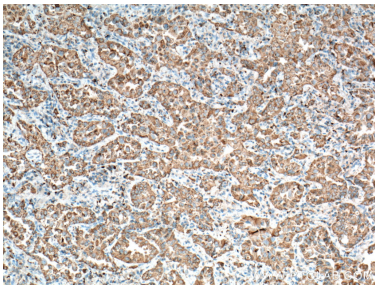
T: 4006900926

E: Proteintech-CN@ptglab.com

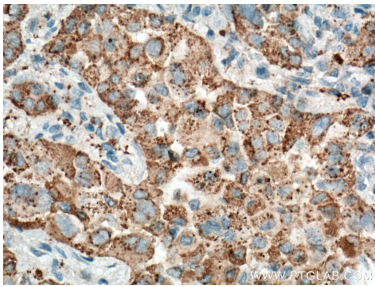
W: ptgcn.com

This product is exclusively available under Proteintech Group brand and is not available to purchase from any other manufacturer.

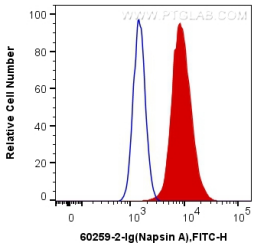
Selected Validation Data



Immunohistochemical analysis of paraffin-embedded human lung cancer tissue slide using 60259-2-Ig (NAPSA antibody) at dilution of 1:4000 (under 10x lens. Heat mediated antigen retrieval with Tris-EDTA buffer (pH 9.0). This data was developed using the same antibody clone with 60259-2-PBS in a different storage buffer formulation.



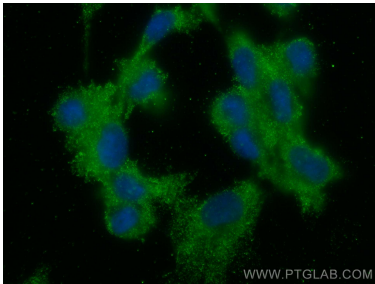
Immunohistochemical analysis of paraffin-embedded human lung cancer tissue slide using 60259-2-Ig (NAPSA antibody) at dilution of 1:4000 (under 40x lens. Heat mediated antigen retrieval with Tris-EDTA buffer (pH 9.0). This data was developed using the same antibody clone with 60259-2-PBS in a different storage buffer formulation.



1X10⁶ A549 cells were intracellularly stained with 0.2 ug Anti-Human Napsin A (60259-2-Ig, Clone:1H7F2) and CoraLite®488-Conjugated AffiniPure Goat Anti-Mouse IgG(H+L) at dilution 1:1000 (red), or 0.2 ug Control Antibody. Cells were fixed with 4% PFA and permeabilized with Flow Cytometry Perm Buffer (PF00011-C). This data was developed using the same antibody clone with 60259-2-PBS in a different storage buffer formulation.



Immunohistochemical analysis of paraffin-embedded human kidney tissue slide using 60259-2-Ig (Napsin A antibody) at dilution of 1:10000 (under 10x lens). Heat mediated antigen retrieval with Tris-EDTA buffer (pH 9.0). This data was developed using the same antibody clone with 60259-2-PBS in a different storage buffer formulation.



Immunofluorescent analysis of (-20°C Methanol) fixed HUVEC cells using Napsin A antibody (60259-2-Ig, Clone: 1H7F2) at dilution of 1:400 and CoraLite®488-Conjugated AffiniPure Goat Anti-Mouse IgG(H+L). This data was developed using the same antibody clone with 60259-2-PBS in a different storage buffer formulation.