

For Research Use Only

# HADHA Monoclonal antibody, PBS Only (Capture)

Catalog Number: 60250-1-PBS

Featured Product



## Basic Information

Catalog Number:

60250-1-PBS

Size:

1mg/ml

Source:

Mouse

Isotype:

IgG1

Immunogen Catalog Number:

AG1211

GenBank Accession Number:

BC009235

GeneID (NCBI):

3030

UNIPROT ID:

P40939

Full Name:

hydroxyacyl-Coenzyme A dehydrogenase/3-ketoacyl-Coenzyme A thiolase/enoyl-Coenzyme A hydratase (trifunctional protein), alpha subunit

Calculated MW:

83 kDa

Observed MW:

79 kDa

Purification Method:

Protein G purification

CloneNo.:

3E9B1

## Applications

Tested Applications:

WB, IHC, IF/ICC, Cytometric bead array, Indirect ELISA

Species Specificity:

human, mouse, rat

## Background Information

HADHA (Trifunctional enzyme subunit alpha, mitochondrial) is also named as HADH, 78 kDa gastrin-binding protein. It belongs to the enoyl-CoA hydratase/isomerase family in the N-terminal section and the 3-hydroxyacyl-CoA dehydrogenase family in the central section. It harbors the 3-hydroxyacyl-CoA dehydrogenase and enoyl-CoA hydratase activities. Defects in HADHA are a cause of trifunctional protein deficiency (TFP deficiency) and long-chain 3-hydroxyl-CoA dehydrogenase deficiency (LCHAD deficiency) and maternal acute fatty liver of pregnancy (AFLP).

## Storage

Storage:

Store at -80°C.

The product is shipped with ice packs. Upon receipt, store it immediately at -80°C

Storage Buffer:

PBS Only

For technical support and original validation data for this product please contact:

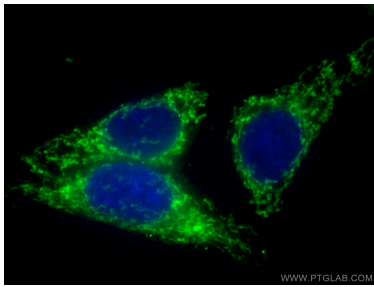
T: 4006900926

E: [Proteintech-CN@ptglab.com](mailto:Proteintech-CN@ptglab.com)

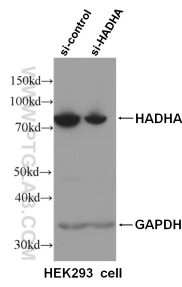
W: [ptgcn.com](http://ptgcn.com)

This product is exclusively available under Proteintech Group brand and is not available to purchase from any other manufacturer.

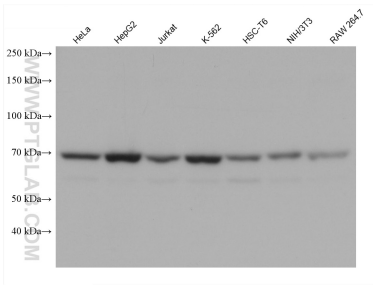
Selected Validation Data



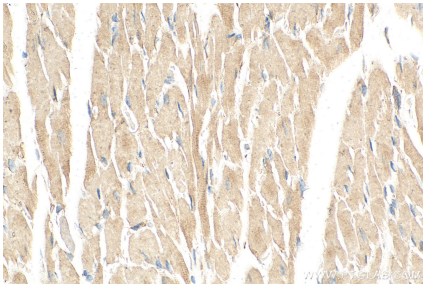
Immunofluorescent analysis of (4% PFA) fixed HepG2 cells using 60250-1-Ig (HADHA antibody) at dilution of 1:100 and CoraLite488-Conjugated AffiniPure Goat Anti-Mouse IgG(H+L). This data was developed using the same antibody clone with 60250-1-PBS in a different storage buffer formulation.



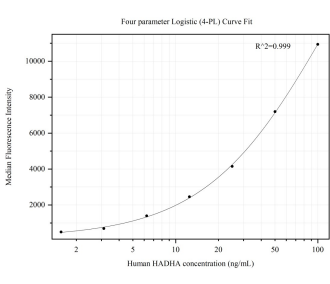
WB result of HADHA specific antibody (60250-1-Ig, 1:4000) with si-control and si-HADHA transfected HEK293 cells. This data was developed using the same antibody clone with 60250-1-PBS in a different storage buffer formulation.



Various lysates were subjected to SDS PAGE followed by western blot with 60250-1-Ig (HADHA antibody) at dilution of 1:10000 incubated at room temperature for 1.5 hours. This data was developed using the same antibody clone with 60250-1-PBS in a different storage buffer formulation.



Immunohistochemical analysis of paraffin-embedded mouse heart tissue slide using 60250-1-Ig (HADHA antibody) at dilution of 1:500 (under 40x lens). Heat mediated antigen retrieval with Tris-EDTA buffer (pH 9.0). This data was developed using the same antibody clone with 60250-1-PBS in a different storage buffer formulation.



Cytometric bead array standard curve of MP50412-1, HADHA Monoclonal Matched Antibody Pair, PBS Only. Capture antibody: 60250-1-PBS. Detection antibody: 60250-2-PBS. Standard:Ag1211. Range: 1.563-100 ng/mL.