

For Research Use Only

# 4EBP1 Monoclonal antibody, PBS Only

Catalog Number: 60246-1-PBS

Featured Product



## Basic Information

Catalog Number:

60246-1-PBS

Size:

1 mg/ml

Source:

Mouse

Isotype:

IgG2b

Immunogen Catalog Number:

AG18985

GenBank Accession Number:

BC004459

GeneID (NCBI):

1978

UNIPROT ID:

Q13541

Full Name:

eukaryotic translation initiation factor 4E binding protein 1

Calculated MW:

118 aa, 12 kDa

Observed MW:

15-24 kDa

Purification Method:

Protein A purification

CloneNo.:

2C3F3

## Applications

Tested Applications:

WB, IHC, IF/ICC, ELISA

Species Specificity:

human, pig

## Background Information

Eukaryotic translation initiation factor 4E-binding protein 1(4EBP1), is a member of 4EBPs family, which regulate the translation of a subset of mRNA by competing with eIF4G for binding to eIF4E, thus preventing the assembly of the eIF4F complex. The eIF4F facilitates the recruitment of other translation initiation factors to form the complex and then initiates cap-dependent translation. 4EBP1 also mediates the regulation of protein translation by growth factors, hormones and other stimuli that signal through the MAP kinase and mTORC1 pathways. There are three forms of 4EBP1, alpha, beta and gamma. typical pattern seen on Western blots for phosphorylated heat-acid stabled protein 4EBP1 from rat gastrocnemius muscle. Three distinct bands are noted, with the most rapidly migrating band having an apparent molecular mass of ; 20 kDa and the slowest migrating band of; 24 kDa. The 3 bands are designated by convention as alpha, beta and gamma. (PMID: 10913029)

## Storage

Storage:

Store at -80°C.

The product is shipped with ice packs. Upon receipt, store it immediately at -80°C

Storage Buffer:

PBS Only

For technical support and original validation data for this product please contact:

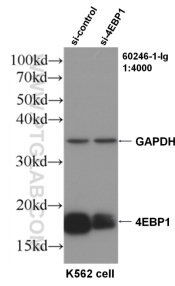
T: 4006900926

E: Proteintech-CN@ptglab.com

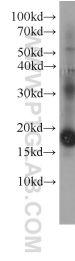
W: ptgcn.com

This product is exclusively available under Proteintech Group brand and is not available to purchase from any other manufacturer.

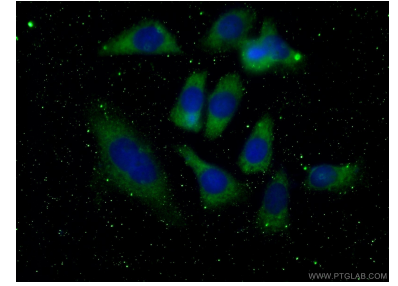
## Selected Validation Data



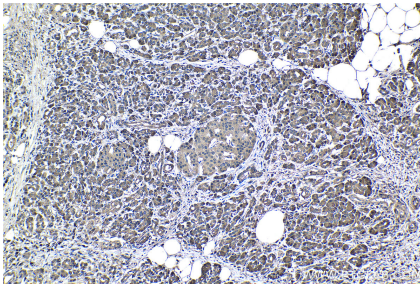
WB result of 4EBP1 antibody (60246-1-Ig, 1:4000) with si-Control and si-4EBP1 transfected K562 cells. This data was developed using the same antibody clone with 60246-1-PBS in a different storage buffer formulation.



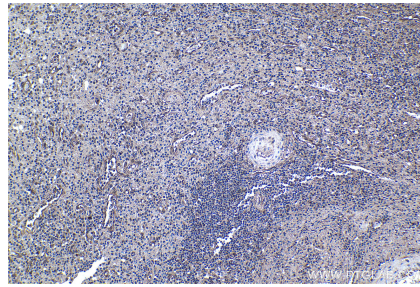
K-562 cells were subjected to SDS PAGE followed by western blot with 60246-1-Ig (4EBP1 antibody) at dilution of 1:2000 incubated at room temperature for 1.5 hours. This data was developed using the same antibody clone with 60246-1-PBS in a different storage buffer formulation.



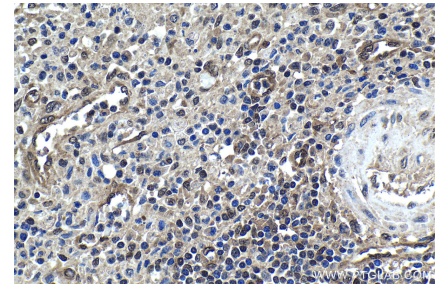
Immunofluorescent analysis of (-20°C Ethanol ) fixed HeLa cells using 60246-1-Ig(4EBP1 antibody) at dilution of 1:100 and Alexa Fluor 488-conjugated AffiniPure Goat Anti-Mouse IgG(H+L). This data was developed using the same antibody clone with 60246-1-PBS in a different storage buffer formulation.



Immunohistochemical analysis of paraffin-embedded human pancreas cancer tissue slide using 60246-1-Ig (4EBP1 antibody) at dilution of 1:2000 (under 10x lens). Heat mediated antigen retrieval with Tris-EDTA buffer (pH 9.0). This data was developed using the same antibody clone with 60246-1-PBS in a different storage buffer formulation.



Immunohistochemical analysis of paraffin-embedded human colon cancer tissue slide using 60246-1-Ig (4EBP1 antibody) at dilution of 1:2000 (under 10x lens). Heat mediated antigen retrieval with Tris-EDTA buffer (pH 9.0). This data was developed using the same antibody clone with 60246-1-PBS in a different storage buffer formulation.



Immunohistochemical analysis of paraffin-embedded human colon cancer tissue slide using 60246-1-Ig (4EBP1 antibody) at dilution of 1:2000 (under 40x lens). Heat mediated antigen retrieval with Tris-EDTA buffer (pH 9.0). This data was developed using the same antibody clone with 60246-1-PBS in a different storage buffer formulation.