

# PLAA Monoclonal antibody

Catalog Number: 60244-1-Ig

Featured Product

## Basic Information

## Catalog Number:

60244-1-Ig

## Size:

1360 µg/ml

## Source:

Mouse

## Isotype:

IgG1

## Immunogen Catalog Number:

AG3224

## GenBank Accession Number:

BC032551

## GeneID (NCBI):

9373

## UNIPROT ID:

Q9Y263

## Full Name:

phospholipase A2-activating protein

## Calculated MW:

738 aa, 81 kDa

## Observed MW:

75-80 kDa

## Purification Method:

Protein A purification

## CloneNo.:

5C10G9

## Recommended Dilutions:

WB 1:500-1:2000

IHC 1:50-1:500

## Applications

## Tested Applications:

IHC, WB, ELISA

## Species Specificity:

human, mouse, rat

**Note-IHC: suggested antigen retrieval with TE buffer pH 9.0; (\*) Alternatively, antigen retrieval may be performed with citrate buffer pH 6.0**

## Positive Controls:

WB : ROS1728 cells, K-562 cells, MCF-7 cells, A431 cells

IHC : human kidney tissue,

## Background Information

Phospholipase A-2-activating protein (PLAA), also named PLAP, can interact with ubiquitin and is involved in the maintenance of ubiquitin levels. PLAA contains multiple consensus domains including WD repeats, PFU domain and PUL domain. Although the function of PLAA remains unclear, ubiquitin binding of PLAA might be the central role that connects ubiquitination and degradation in ERAD. Recent finding revealed that PLAA served as a novel nociceptive mediator after incision, and its expression level is regulated by miR-203.

## Storage

## Storage:

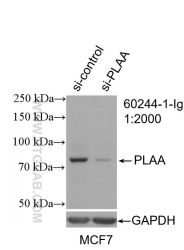
Store at -20°C. Stable for one year after shipment.

## Storage Buffer:

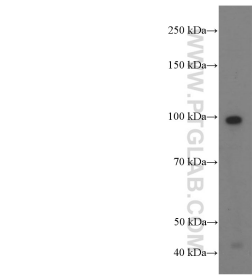
PBS with 0.02% sodium azide and 50% glycerol pH 7.3.

Aliquoting is unnecessary for -20°C storage

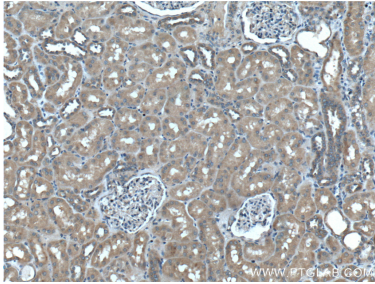
Selected Validation Data



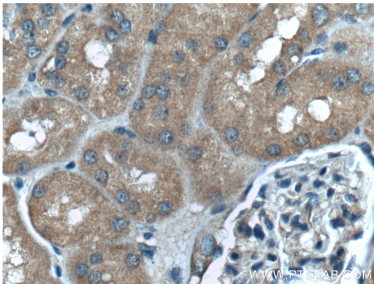
WB result of PLAA antibody (60244-1-Ig; 1:2000; incubated at room temperature for 1.5 hours) with sh-Control and sh-PLAA transfected MCF-7 cells.



ROS1728 cells were subjected to SDS PAGE followed by western blot with 60244-1-Ig (PLAA Antibody) at dilution of 1:1000 incubated at room temperature for 1.5 hours.



Immunohistochemical analysis of paraffin-embedded human kidney tissue slide using 60244-1-Ig (PLAA Antibody) at dilution of 1:200 (under 10x lens).



Immunohistochemical analysis of paraffin-embedded human kidney tissue slide using 60244-1-Ig (PLAA Antibody) at dilution of 1:200 (under 40x lens).