

For Research Use Only

# PFKFB3 Monoclonal antibody, PBS Only (Detector)

Catalog Number: 60241-1-PBS



## Basic Information

Catalog Number:	60241-1-PBS	GenBank Accession Number:	BC040482	Purification Method:	Protein G purification
Source:	Mouse	GeneID (NCBI):	5209	CloneNo.:	4D1B11
Isotype:	IgG1	UNIPROT ID:	Q16875		
Immunogen Catalog Number:	AG4737	Full Name:	6-phosphofructo-2-kinase/fructose-2,6-bisphosphatase 3		
		Calculated MW:	520 aa, 60 kDa		
		Observed MW:	55-58 kDa		

## Applications

**Tested Applications:**  
Cytometric bead array, Indirect ELISA

**Species Specificity:**  
human, mouse

## Background Information

PFKFB3, also named as NY-REN-56 and iPFK-2, plays a role in glucose metabolism. It synthesis and degradation of fructose 2,6-bisphosphate. Endogenously generated adenosine cooperates with bacterial components to increase PFKFB3 isozyme activity, resulting in greater fructose 2,6-bisphosphate accumulation. PFKFB3 is required for increased growth, metabolic activity and is regulated through active JAK2 and STAT5.

## Storage

**Storage:**  
Store at -80°C.  
**The product is shipped with ice packs. Upon receipt, store it immediately at -80°C**

**Storage Buffer:**  
PBS only, pH7.3

For technical support and original validation data for this product please contact:

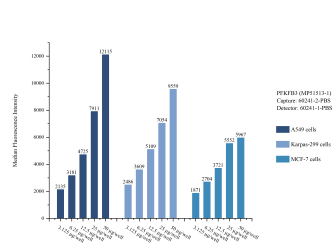
T: 4006900926

E: [Proteintech-CN@ptglab.com](mailto:Proteintech-CN@ptglab.com)

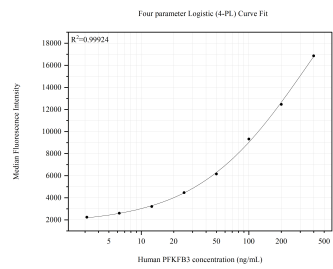
W: [ptgcn.com](http://ptgcn.com)

**This product is exclusively available under Proteintech Group brand and is not available to purchase from any other manufacturer.**

Selected Validation Data



Cytometric bead array sample test of MP51513-1, PFKFB3 Monoclonal Matched Antibody Pair, PBS Only. Capture antibody: 60241-2-PBS. Detection antibody: 60241-1-PBS.



Cytometric bead array standard curve of MP51513-1, PFKFB3 Monoclonal Matched Antibody Pair, PBS Only. Capture antibody: 60241-2-PBS. Detection antibody: 60241-1-PBS. Standard:Ag4737. Range: 3.125-400 ng/mL.