

For Research Use Only

# Desmin Monoclonal antibody, PBS Only (Detector)

Catalog Number: 60226-3-PBS



## Basic Information

Catalog Number:

60226-3-PBS

Concentration:

1000 µg/ml

Source:

Mouse

Isotype:

IgG1

Immunogen Catalog Number:

AG9675

GenBank Accession Number:

BC032116

GeneID (NCBI):

1674

UNIPROT ID:

P17661

Full Name:

desmin

Calculated MW:

470 aa, 54 kDa

Purification Method:

Protein G purification

CloneNo.:

4A8D4

## Applications

Tested Applications:

Sandwich ELISA, Indirect ELISA, Sample test

Species Specificity:

human

## Background Information

### Storage

Storage:

Store at -80°C.

The product is shipped with ice packs. Upon receipt, store it immediately at -80°C

Storage Buffer:

PBS Only

For technical support and original validation data for this product please contact:

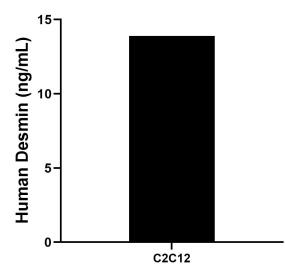
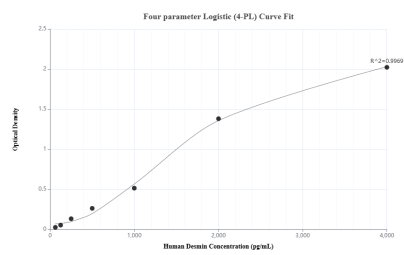
T: 4006900926

E: [Proteintech-CN@ptglab.com](mailto:Proteintech-CN@ptglab.com)

W: [ptgcn.com](http://ptgcn.com)

This product is exclusively available under Proteintech Group brand and is not available to purchase from any other manufacturer.

## Selected Validation Data



Sandwich ELISA standard curve of MP50204-1, Human Desmin Monoclonal Matched Antibody Pair - PBS only. 60226-2-PBS was coated to a plate as the capture antibody and incubated with serial dilutions of standard Ag9675. 60226-3-PBS was HRP conjugated as the detection antibody. Range: 62.5-4000 pg/mL

The mean Desmin concentration was determined to be 13.90 ng/mL in C2C12 cell extract based on a 3.0 mg/mL extract load.