

For Research Use Only

# Desmin Monoclonal antibody

Catalog Number: 60226-1-Ig **12 Publications**



## Basic Information

Catalog Number:

60226-1-Ig

Concentration:

1200 µg/ml

Source:

Mouse

Isotype:

IgG2a

Immunogen Catalog Number:

AG9675

GenBank Accession Number:

BC032116

GeneID (NCBI):

1674

UNIPROT ID:

P17661

Full Name:

desmin

Calculated MW:

470 aa, 54 kDa

Observed MW:

55 kDa

Purification Method:

Protein A purification

CloneNo.:

3E12C8

Recommended Dilutions:

WB 1:500-1:2000

## Applications

Tested Applications:

WB, ELISA

Cited Applications:

WB, IHC, IF

Species Specificity:

human, pig

Cited Species:

human, mouse, rat

Positive Controls:

WB : Human heart, human testis tissue, human heart tissue, human placenta tissue, pig heart tissue, pig colon tissue

## Background Information

Desmin is the main intermediate filament protein in skeletal and cardiac muscle cells and is essential for both the structural integrity and the survival of muscle cells. As an abundant muscle-specific protein, desmin has been widely used as a marker of muscle derived tumors. Anti-desmin is also valuable in the differential diagnosis of tumors of uncertain origin.

## Notable Publications

| Author      | Pubmed ID | Journal              | Application |
|-------------|-----------|----------------------|-------------|
| Qian Feng   | 27986413  | Reprod Biomed Online | IF          |
| Xiaohong Xu | 34107901  | BMC Nephrol          | WB          |
| Pan Gao     | 25017793  | Biochim Biophys Acta | WB          |

## Storage

Storage:

Store at -20°C. Stable for one year after shipment.

Storage Buffer:

PBS with 0.02% sodium azide and 50% glycerol pH 7.3.

Aliquoting is unnecessary for -20°C storage

For technical support and original validation data for this product please contact:

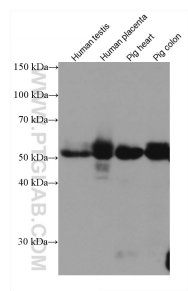
T: 4006900926

E: [Proteintech-CN@ptglab.com](mailto:Proteintech-CN@ptglab.com)

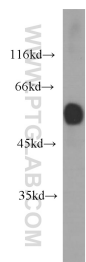
W: [ptgcn.com](http://ptgcn.com)

This product is exclusively available under Proteintech Group brand and is not available to purchase from any other manufacturer.

## Selected Validation Data



Various lysates were subjected to SDS PAGE followed by western blot with 60226-1-Ig (Desmin antibody) at dilution of 1:5000 incubated at room temperature for 1.5 hours.



human heart tissue were subjected to SDS PAGE followed by western blot with 60226-1-Ig (DES antibody) at dilution of 1:1000 incubated at room temperature for 1.5 hours.