

For Research Use Only

# CD44 Monoclonal antibody, PBS Only (Capture/Detector)

Catalog Number: 60224-4-PBS



## Basic Information

Catalog Number:

60224-4-PBS

Source:

Mouse

Isotype:

IgG1

Immunogen Catalog Number:

AG7633

GenBank Accession Number:

BC004372

GeneID (NCBI):

960

ENSEMBL Gene ID:

ENSG00000026508

UNIPROT ID:

P16070

Full Name:

CD44 molecule (Indian blood group)

Calculated MW:

742 aa, 82 kDa

Purification Method:

Protein G Magarose purification

CloneNo.:

8A3F6

## Applications

Tested Applications:

Cytometric bead array, Indirect ELISA

Species Specificity:

human

## Background Information

### Storage

Storage:

Store at -80°C.

The product is shipped with ice packs. Upon receipt, store it immediately at -80°C

Storage Buffer:

PBS only, pH7.3

For technical support and original validation data for this product please contact:

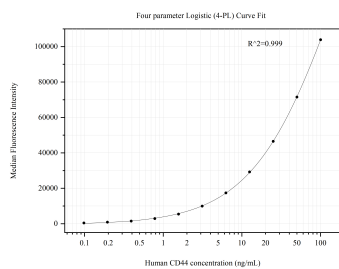
T: 4006900926

E: [Proteintech-CN@ptglab.com](mailto:Proteintech-CN@ptglab.com)

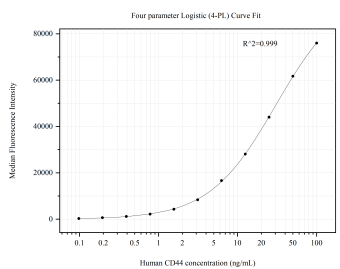
W: [ptgcn.com](http://ptgcn.com)

This product is exclusively available under Proteintech Group brand and is not available to purchase from any other manufacturer.

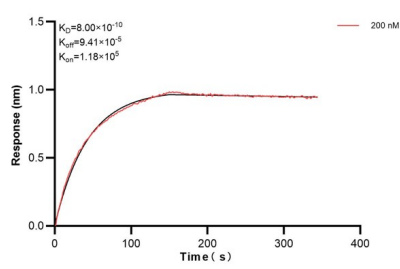
## Selected Validation Data



Cytometric bead array standard curve of MP50724-2, CD44 Monoclonal Matched Antibody Pair, PBS Only. Capture antibody: 60224-4-PBS. Detection antibody: 60224-3-PBS. Standard:Ag7633. Range: 0.098-100 ng/mL.



Cytometric bead array standard curve of MP50724-3, CD44 Monoclonal Matched Antibody Pair, PBS Only. Capture antibody: 60224-2-PBS. Detection antibody: 60224-4-PBS. Standard:Ag7633. Range: 0.098-100 ng/mL.



Biolayer interferometry (BLI) kinetic assay of 60224-4-Ig against Human CD44 was performed. The affinity constant is 0.80 nM.