

For Research Use Only

SMMHC Monoclonal antibody, PBS Only

Catalog Number: 60222-1-PBS



Basic Information

Catalog Number:

60222-1-PBS

Size:

1mg/ml

Source:

Mouse

Isotype:

IgG1

Immunogen Catalog Number:

AG13397

GenBank Accession Number:

BC101677

GeneID (NCBI):

4629

UNIPROT ID:

P35749

Full Name:

myosin, heavy chain 11, smooth muscle

Calculated MW:

1938 aa, 224 kDa

Observed MW:

220 kDa

Purification Method:

Protein A purification

CloneNo.:

5C6D3

Applications

Tested Applications:

WB, IHC, IF/ICC, ELISA

Species Specificity:

human, mouse, rat, pig, rabbit

Background Information

SMMHC (smooth muscle myosin heavy chain; MYH11) is a contractile protein of smooth muscle cells. It is specifically expressed in cells derived from smooth muscle lineages. SMMHC is used as vascular smooth muscle cell (vSMC) contractile marker. It is also an excellent marker for myoepithelial cells, with no or few cross-reaction with myofibroblasts, thus very useful in the evaluation of stromal invasion.

Storage

Storage:

Store at -80°C.

The product is shipped with ice packs. Upon receipt, store it immediately at -80°C

Storage Buffer:

PBS Only

For technical support and original validation data for this product please contact:

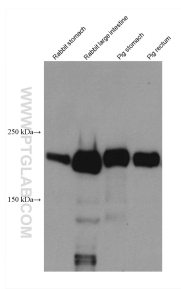
T: 4006900926

E: Proteintech-CN@ptglab.com

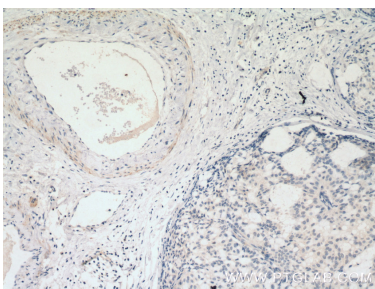
W: ptgcn.com

This product is exclusively available under Proteintech Group brand and is not available to purchase from any other manufacturer.

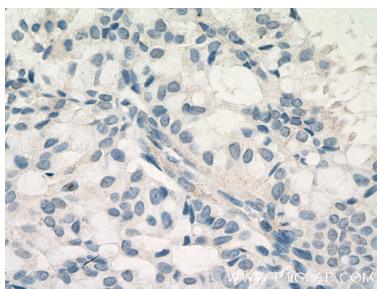
Selected Validation Data



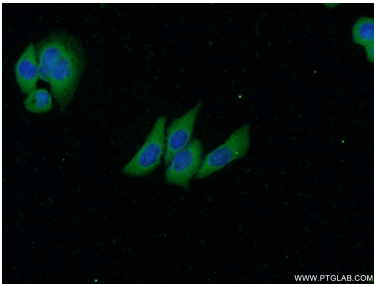
Various lysates were subjected to SDS PAGE followed by western blot with 60222-1-Ig (SMMHC antibody) at dilution of 1:5000 incubated at room temperature for 1.5 hours. This data was developed using the same antibody clone with 60222-1-PBS in a different storage buffer formulation.



Immunohistochemical analysis of paraffin-embedded human breast hyperplasia tissue slide using 60222-1-Ig (SMMHC antibody) at dilution of 1:1000 (under 10x lens). Heat mediated antigen retrieval with Tris-EDTA buffer (pH 9.0). This data was developed using the same antibody clone with 60222-1-PBS in a different storage buffer formulation.



Immunohistochemical analysis of paraffin-embedded human breast hyperplasia tissue slide using 60222-1-Ig (SMMHC antibody) at dilution of 1:1000 (under 40x lens). Heat mediated antigen retrieval with Tris-EDTA buffer (pH 9.0). This data was developed using the same antibody clone with 60222-1-PBS in a different storage buffer formulation.



Immunofluorescent analysis of HeLa cells using 60222-1-Ig (SMMHC antibody) at dilution of 1:50 and Alexa Fluor 488-conjugated AffiniPure Goat Anti-Mouse IgG (H+L). This data was developed using the same antibody clone with 60222-1-PBS in a different storage buffer formulation.



Immunohistochemical analysis of paraffin-embedded human colon tissue slide using 60222-1-Ig (SMMHC antibody) at dilution of 1:2000 (under 10x lens). Heat mediated antigen retrieval with Tris-EDTA buffer (pH 9.0). This data was developed using the same antibody clone with 60222-1-PBS in a different storage buffer formulation.