

For Research Use Only

# SMMHC Monoclonal antibody

Catalog Number: 60222-1-Ig **5 Publications**



## Basic Information

<b>Catalog Number:</b> 60222-1-Ig	<b>GenBank Accession Number:</b> BC101677	<b>Purification Method:</b> Protein A purification
<b>Size:</b> 1000 µg/ml	<b>GeneID (NCBI):</b> 4629	<b>CloneNo.:</b> 5C6D3
<b>Source:</b> Mouse	<b>UNIPROT ID:</b> P35749	<b>Recommended Dilutions:</b> WB 1:2000-1:20000 IHC 1:500-1:2000 IF 1:50-1:500
<b>Isotype:</b> IgG1	<b>Full Name:</b> myosin, heavy chain 11, smooth muscle	
<b>Immunogen Catalog Number:</b> AG13397	<b>Calculated MW:</b> 1938 aa, 224 kDa	
	<b>Observed MW:</b> 220 kDa	

## Applications

**Tested Applications:**  
IF/ICC, IHC, WB, ELISA

**Cited Applications:**  
WB, IF

**Species Specificity:**  
human, mouse, rat, pig, rabbit

**Cited Species:**  
human, rat, mouse

**Note-IHC: suggested antigen retrieval with TE buffer pH 9.0; (\*) Alternatively, antigen retrieval may be performed with citrate buffer pH 6.0**

**Positive Controls:**

**WB:** rabbit stomach tissue, human ileum tissue, rat rectum tissue, HeLa cells, rabbit large intestine, pig stomach, pig rectum, rat colon, mouse colon

**IHC:** human breast hyperplasia tissue,

**IF:** HeLa cells,

## Background Information

SMMHC (smooth muscle myosin heavy chain; MYH11) is a contractile protein of smooth muscle cells. It is specifically expressed in cells derived from smooth muscle lineages. SMMHC is used as vascular smooth muscle cell (vSMC) contractile marker. It is also an excellent marker for myoepithelial cells, with no or few cross-reaction with myofibroblasts, thus very useful in the evaluation of stromal invasion.

## Notable Publications

Author	Pubmed ID	Journal	Application
Bao-Ying Luo	35643386	Biochim Biophys Acta Mol Basis Dis	IF
Hongliang Li	35299056	Atherosclerosis	WB,IF
Qiao Yu	33812737	Nutr Metab Cardiovasc Dis	WB

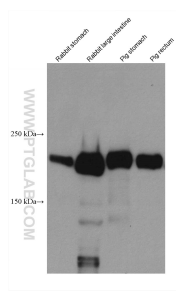
## Storage

**Storage:**  
Store at -20°C. Stable for one year after shipment.  
**Storage Buffer:**  
PBS with 0.02% sodium azide and 50% glycerol pH 7.3.  
Aliquoting is unnecessary for -20°C storage

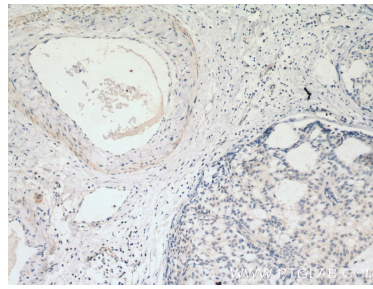
For technical support and original validation data for this product please contact:  
T: 4006900926 E: Proteintech-CN@ptglab.com W: ptgcn.com

**This product is exclusively available under Proteintech Group brand and is not available to purchase from any other manufacturer.**

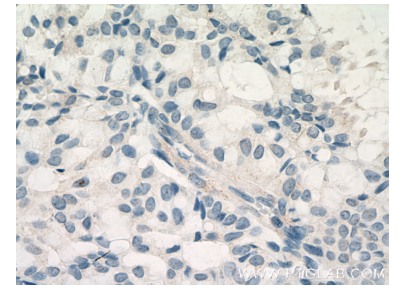
## Selected Validation Data



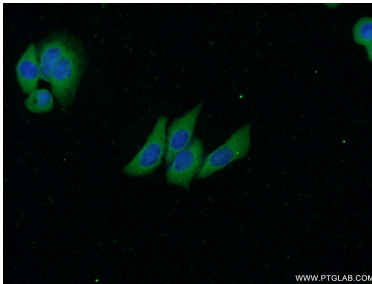
Various lysates were subjected to SDS PAGE followed by western blot with 60222-1-Ig (SMMHC antibody) at dilution of 1:5000 incubated at room temperature for 1.5 hours.



Immunohistochemical analysis of paraffin-embedded human breast hyperplasia tissue slide using 60222-1-Ig (SMMHC antibody) at dilution of 1:1000 (under 10x lens. Heat mediated antigen retrieval with Tris-EDTA buffer (pH 9.0).



Immunohistochemical analysis of paraffin-embedded human breast hyperplasia tissue slide using 60222-1-Ig (SMMHC antibody) at dilution of 1:1000 (under 40x lens. Heat mediated antigen retrieval with Tris-EDTA buffer (pH 9.0).



Immunofluorescent analysis of HeLa cells using 60222-1-Ig (SMMHC antibody) at dilution of 1:50 and Alexa Fluor 488-conjugated AffiniPure Goat Anti-Mouse IgG (H+L).