

For Research Use Only

BCS1L Monoclonal antibody, PBS Only (Capture)

Catalog Number: 60212-1-PBS

Featured Product



Basic Information

Catalog Number:

60212-1-PBS

Size:

1mg/ml

Source:

Mouse

Isotype:

IgG1

Immunogen Catalog Number:

AG18280

GenBank Accession Number:

BC007500

GeneID (NCBI):

617

UNIPROT ID:

Q9Y276

Full Name:

BCS1-like (yeast)

Calculated MW:

48 kDa

Observed MW:

47 kDa

Purification Method:

Protein G purification

CloneNo.:

3G6H1

Applications

Tested Applications:

WB, IHC, IF/ICC, Cytometric bead array, Indirect ELISA

Species Specificity:

human, mouse

Background Information

Human BCS1-like (BCS1L), a mitochondrial inner-membrane protein, is a chaperone necessary for the assembly of mitochondrial respiratory chain complex III. Recently studies indicated that the mutations in this protein may cause the GRACILE (growth retardation, aminoaciduria, cholestasis, iron overload, lactic acidosis, and early death) syndrome, a recessively inherited lethal disease characterized by fetal growth retardation, lactic acidosis, aminoaciduria, cholestasis, and abnormalities in iron metabolism.

Storage

Storage:

Store at -80°C.

The product is shipped with ice packs. Upon receipt, store it immediately at -80°C

Storage Buffer:

PBS Only

For technical support and original validation data for this product please contact:

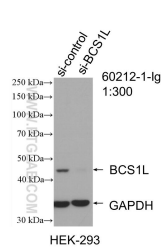
T: 4006900926

E: Proteintech-CN@ptglab.com

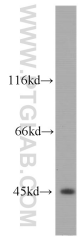
W: ptgcn.com

This product is exclusively available under Proteintech Group brand and is not available to purchase from any other manufacturer.

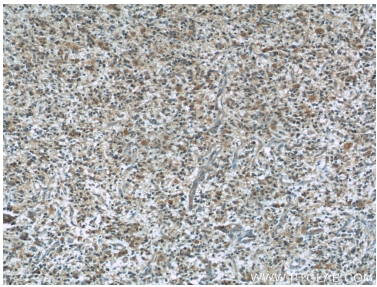
Selected Validation Data



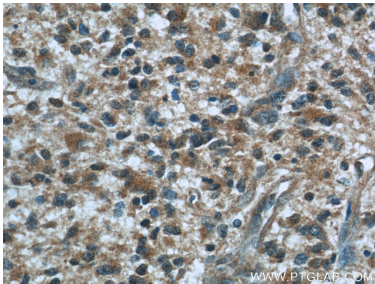
WB result of BCS1L antibody (60212-1-Ig; 1:300; incubated at room temperature for 1.5 hours) with sh-Control and sh-BCS1L transfected HEK-293 cells. This data was developed using the same antibody clone with 60212-1-PBS in a different storage buffer formulation.



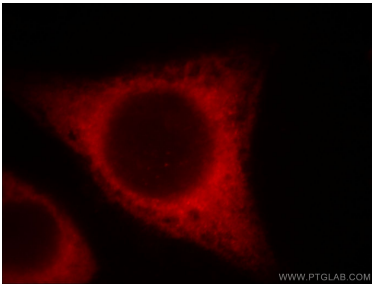
COLO 320 cells were subjected to SDS PAGE followed by western blot with 60212-1-Ig (BCS1L antibody) at dilution of 1:1000 incubated at room temperature for 1.5 hours. This data was developed using the same antibody clone with 60212-1-PBS in a different storage buffer formulation.



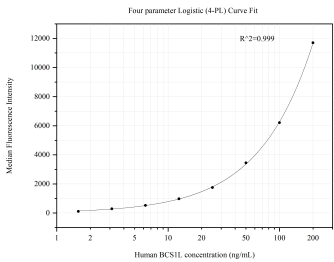
Immunohistochemical analysis of paraffin-embedded human gliomas using 60212-1-Ig(BCS1L antibody) at dilution of 1:50 (under 10x lens). This data was developed using the same antibody clone with 60212-1-PBS in a different storage buffer formulation.



Immunohistochemical analysis of paraffin-embedded human gliomas using 60212-1-Ig(BCS1L antibody) at dilution of 1:50 (under 40x lens). This data was developed using the same antibody clone with 60212-1-PBS in a different storage buffer formulation.



Immunofluorescent analysis of () fixed MCF-7 cells using 60212-1-Ig (BCS1L antibody) at dilution of 1:50 and Rhodamine-Goat anti-Rabbit IgG. This data was developed using the same antibody clone with 60212-1-PBS in a different storage buffer formulation.



Cytometric bead array standard curve of MP50678-1, BCS1L Monoclonal Matched Antibody Pair, PBS Only. Capture antibody: 60212-1-PBS. Detection antibody: 60212-2-PBS. Standard:Ag18280. Range: 1.563-200 ng/mL