

For Research Use Only

# BCS1L Monoclonal antibody

Catalog Number: 60212-1-Ig **Featured Product**



## Basic Information

<b>Catalog Number:</b> 60212-1-Ig	<b>GenBank Accession Number:</b> BC007500	<b>Purification Method:</b> Protein G purification
<b>Size:</b> 1500 µg/ml	<b>GeneID (NCBI):</b> 617	<b>CloneNo.:</b> 3G6H1
<b>Source:</b> Mouse	<b>UNIPROT ID:</b> Q9Y276	<b>Recommended Dilutions:</b> WB 1:500-1:2000 IHC 1:20-1:200 IF 1:20-1:200
<b>Isotype:</b> IgG1	<b>Full Name:</b> BCS1-like (yeast)	
<b>Immunogen Catalog Number:</b> AG18280	<b>Calculated MW:</b> 48 kDa	
	<b>Observed MW:</b> 47 kDa	

## Applications

**Tested Applications:**  
IF/ICC, IHC, WB, ELISA

**Species Specificity:**  
human, mouse

**Note-IHC: suggested antigen retrieval with TE buffer pH 9.0; (\*) Alternatively, antigen retrieval may be performed with citrate buffer pH 6.0**

**Positive Controls:**

**WB :** Colo320 cells, COLO 320 cells, HEK-293 cells

**IHC :** human gliomas tissue, human brain tissue, human kidney tissue

**IF :** MCF-7 cells,

## Background Information

Human BCS1-like (BCS1L), a mitochondrial inner-membrane protein, is a chaperone necessary for the assembly of mitochondrial respiratory chain complex III. Recently studies indicated that the mutations in this protein may cause the GRACILE (growth retardation, aminoaciduria, cholestasis, iron overload, lacticidosis, and early death) syndrome, a recessively inherited lethal disease characterized by fetal growth retardation, lactic acidosis, aminoaciduria, cholestasis, and abnormalities in iron metabolism.

## Storage

**Storage:**

Store at -20°C. Stable for one year after shipment.

**Storage Buffer:**

PBS with 0.02% sodium azide and 50% glycerol pH 7.3.

Aliquoting is unnecessary for -20°C storage

For technical support and original validation data for this product please contact:

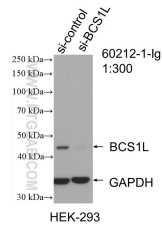
T: 4006900926

E: [Proteintech-CN@ptglab.com](mailto:Proteintech-CN@ptglab.com)

W: [ptgcn.com](http://ptgcn.com)

**This product is exclusively available under Proteintech Group brand and is not available to purchase from any other manufacturer.**

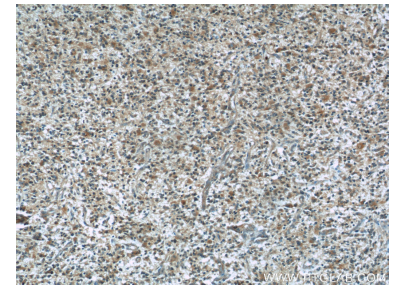
## Selected Validation Data



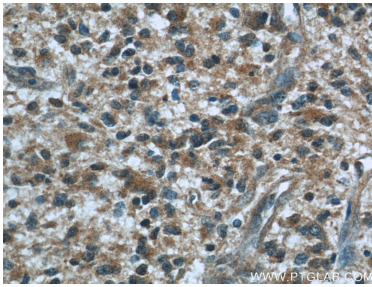
WB result of BCS1L antibody (60212-1-Ig; 1:300; incubated at room temperature for 1.5 hours) with sh-Control and sh-BCS1L transfected HEK-293 cells.



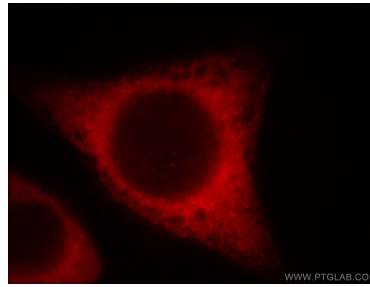
COLO 320 cells were subjected to SDS PAGE followed by western blot with 60212-1-Ig (BCS1L antibody) at dilution of 1:1000 incubated at room temperature for 1.5 hours.



Immunohistochemical analysis of paraffin-embedded human gliomas using 60212-1-Ig (BCS1L antibody) at dilution of 1:50 (under 10x lens).



Immunohistochemical analysis of paraffin-embedded human gliomas using 60212-1-Ig (BCS1L antibody) at dilution of 1:50 (under 40x lens).



Immunofluorescent analysis of ( ) fixed MCF-7 cells using 60212-1-Ig (BCS1L antibody) at dilution of 1:50 and Rhodamine-Goat anti-Rabbit IgG.