

For Research Use Only

# CD23 Monoclonal antibody, PBS Only (Detector)

Catalog Number: 60208-3-PBS



## Basic Information

Catalog Number:

60208-3-PBS

Size:

1 mg/ml

Source:

Mouse

Isotype:

IgG2b

Immunogen Catalog Number:

AG0425

GenBank Accession Number:

BC064417

GeneID (NCBI):

2208

UNIPROT ID:

P06734

Full Name:

Fc fragment of IgE, low affinity II, receptor for (CD23)

Calculated MW:

321 aa, 36 kDa

Purification Method:

Protein A Magarose purification

CloneNo.:

1A12A7

## Applications

Tested Applications:

Cytometric bead array, Indirect ELISA

Species Specificity:

human

## Background Information

### Storage

Storage:

Store at -80°C.

The product is shipped with ice packs. Upon receipt, store it immediately at -80°C

Storage Buffer:

PBS Only

For technical support and original validation data for this product please contact:

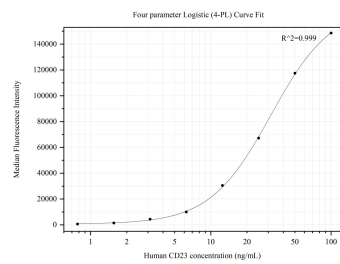
T: 4006900926

E: [Proteintech-CN@ptglab.com](mailto:Proteintech-CN@ptglab.com)

W: [ptgcn.com](http://ptgcn.com)

This product is exclusively available under Proteintech Group brand and is not available to purchase from any other manufacturer.

# Selected Validation Data



Cytometric bead array standard curve of MP50220-1, CD23,FCER2 Monoclonal Matched Antibody Pair, PBS Only. Capture antibody: 60208-2-PBS. Detection antibody: 60208-3-PBS. Standard:Ag0425. Range: 0.781-100 ng/mL